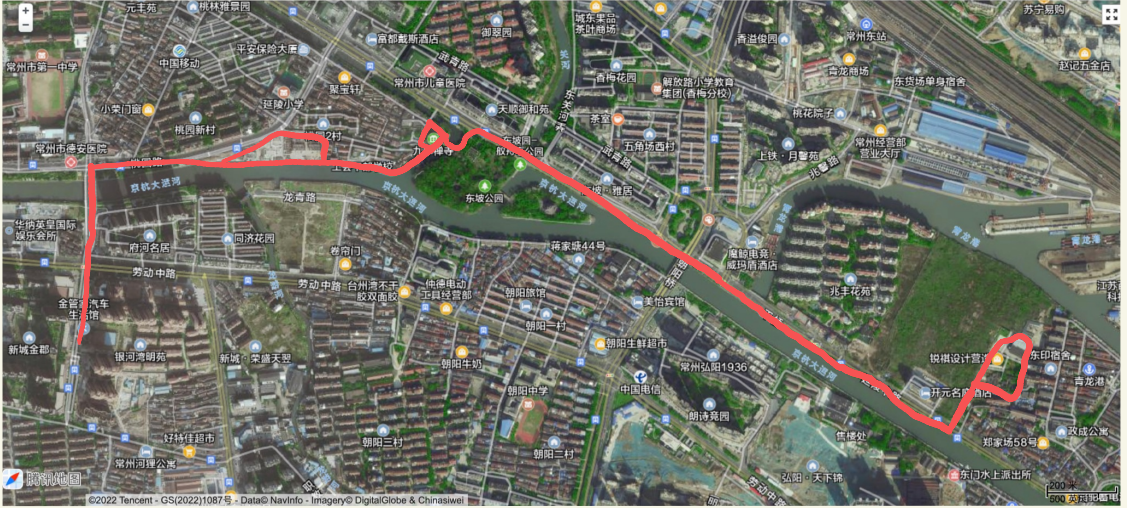
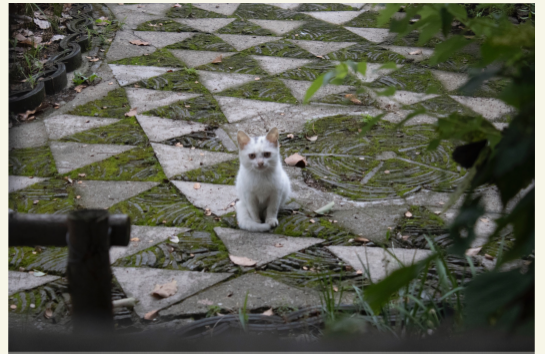


Path of Exploration 1



Some interesting beings





Actions and Interactions



Plastic broken by bird shit



Tree heels itself and engulfs metal



River snail shell littered by birds or human



Creeper winding around wires



*Wall broken by growing plant
(maybe also by heat, rain and other things)*

How Nature wear out things and preserves things



Rust

- worn out by humidity, heat, wind ...



Broken Bridge Stone

- broken by growing plants



Broken Plastic Frame

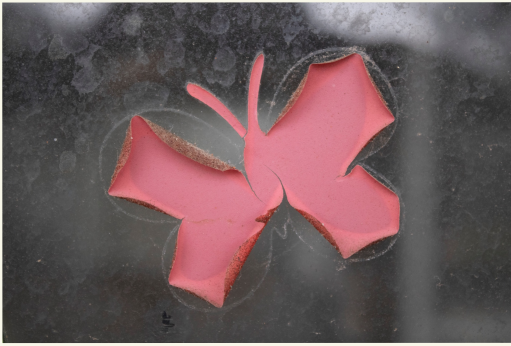
- curled by heat
broken because of the force
in itself



Fading Signs

- worn out by rain and wind





- worn out
- but the original contour is preserved with dust



- preserved by wind (dried and mummified)



- signs being torn off leaving behind a shape of tone lighter than the wall around



- remaining claws of creepers indicating their original growing path