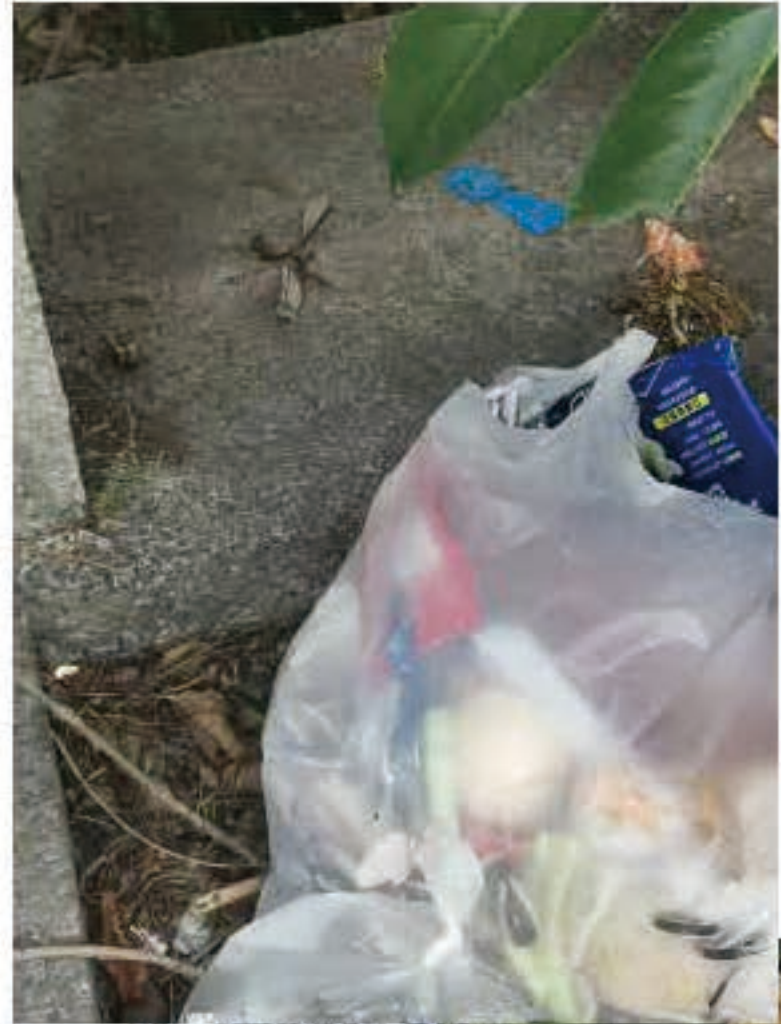






# Life brought by “rubbish”



I found these things besides the fence of the neighborhood

The plant in the brickwork and the road plant is not the same specie



What role does these rubbish take in the cycle of urban nature?

Only the fresh rubbish can attract ants





DAY1

DAY2



A peach pit



Still many ants

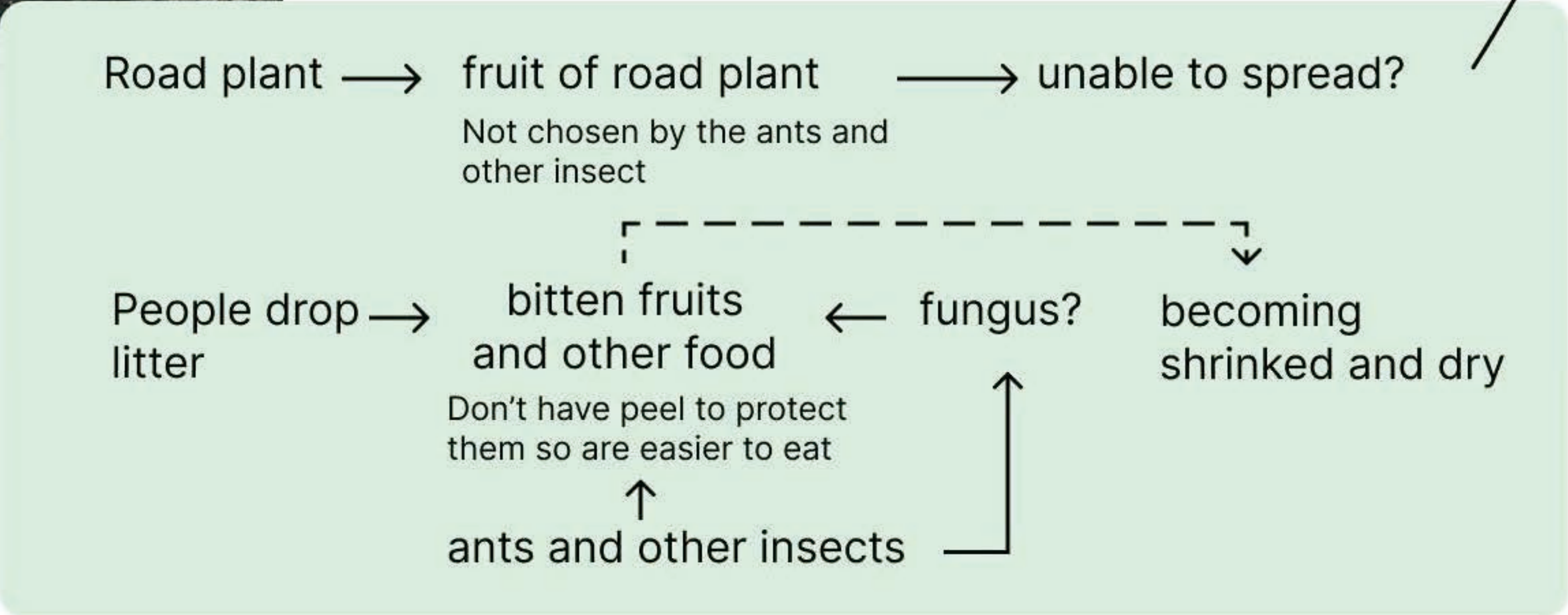
There were other kind of fruits near by, but the ants didn't choose to ate them?

Maybe it just because the other fruits didn't start rotting and they have peel

Some part of the fungus (?) living on the peach pit disappeared..., maybe it was eaten by some tiny animals or the peach pit was moved?

*Just guess*

Not sure what are them...  
I guess they are some kind of fungus Looks a little bit disgusting  
Some ants are surrounded





# DAY1

Several flies stayed near the wound on its head and ate it

The flies went away at night ,there were only ants(not very clear in this picture)



Looks a little bit disgusting

A dead rat with its head squashed

Maybe it was caught by rat trap

# DAY2

The posture of mice changed, was there anyone moved it ?



The mice started rotting



DAY3



More and more ants...  
Its body became flattened, and you can even see its bone

DAY4



I saw flesh worms...  
It took me some time to find it again, its not very easy to recognize at that time

DAY5



It looked like a broken bag and seemed had no flesh at all

It's not disgusting anymore to me as it didn't looks like something which used to have life

DAY6



My mom(who never saw it before)even couldn't recognize it when I took this picture



Not sure if its about urban nature...

## Trees were used as sth. like Bulletin Board

Trying to tell some one who had stolen his/her money give it back to him/her. 😂



Looks like it used to be a landmark during the quarantine time 🙄

It seems that people treated street trees the same as something lifeless. We humanbeings just care about their function

Seems he didn't admit he was the theive...



# Plants grow beyond the limit of artefacts

Plants really have strong life



Use a green net as artificial grass but cover the real land and some plants



Plants grow with rubbish



turf or moss which was uprooted by people

People trying to manipulate their growth?



# Traces of animals and insects



**Ants** (you can see them everywhere)



**Snail shell**



**feathers**  
not sure who is its owner







Spider and its net



A fly



Entrance of ants' colony



The first time I saw a bee on the ground



Entrance of ants' colony



A bird here... I tried to go closer but scared her.



# Life brought by artefacts

Below the outside part of the air-conditioner



I got mosquito bites here

