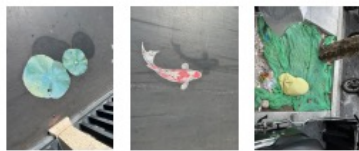
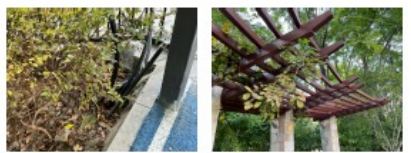
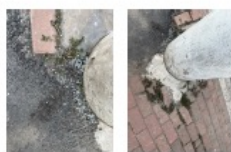


# Man-made and nature

human try to paint or choose green colors to let the urban surroundings "look" like nature



Plants grow or mix with artifacts



Diseased plants that appear to decay due to fungal infestation



The damp stone was covered with moss



The point in the neighborhood where the rats were poisoned

The fungus parasitizes other trees



feel&see the wind



Moldy algae(probably)





搜索地点或地址



爱玛电动车

Zhenping Road Bridge

dense white fungus (hard) growing on the tree trunk



White fungus parasitic on branch section



Aoki infected with anthracnose (which is a fungal disease caused by the anthracnose)



plants grow in a very dry soil & around piled up bags



water pipes buried under the ground get sealed with tapes



spider webs on the pole of lamp with sycamore fluff



Unknown creatures-filamentous with green & purple



The algae on the shore are moldy and stick to the stone bricks

Leaves covered with white powder - Plants infected with powdery mildew  
Powdery mildew is the hyphae and conidia of pathogenic fungi



Leaf edges and veins are white (haven't found what kind of disease)



in the side bricks moss on the side stone also different kinds of grass in the hole



Branches grow through gaps Southeast direction



on the bridge paints of fish and lotus leaves (which do not grow in the river)



1. The green net is to prevent the transpiration of the soil due to the high temperature to protect the tree  
2. most of the nets are green (which means to look green)



under street lights  
grass and glass slag (fragment of street lamp shade mixed together)



Suzhou River

Baocheng Bridge

37°C  
空气质量指数 38

Because of the uneven forces by air, when the leaves fall down,they whirled





Can hear the wind



Can see the wind



Geckos in the dormitory



Sounds of cars and birds



Butterfly stands on the little daisy with birds singing in the surroundings

