

Search for a place or address



bees

creepers

creepers

grass between rocks

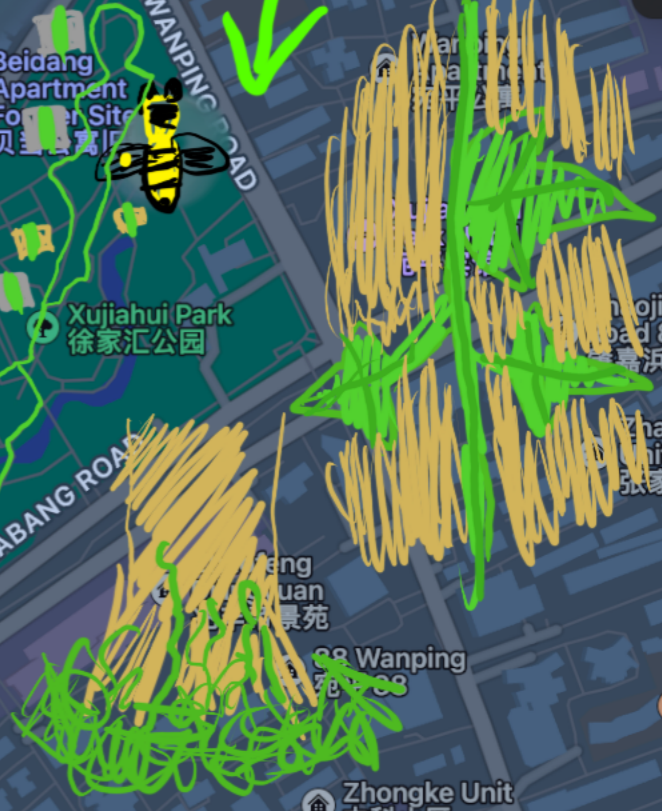
creepers on tree

Trumpet creeper



start

end



Shanghai Chest Hospital Affiliated to Shanghai Jiaotong University

LESHAN SANCUN 乐山三村

Shanghai Jiaotong University Xuhui Campus

Shanghai Jiaotong University Xuhui Campus Machinery Power Building

Shanghai Jiaotong University Xuhui Campus Huigu Science & Technology Building

Haidilao Hot Pot 海底捞火锅

Grandma's Home 外婆家

Xujiahui Park Former Site of Pathe Company

XUJIAHUI 徐家汇

Grand Gateway 港汇恒隆广场

Shanghai No.6 Department Store 上海六百

Orient Shopping Centre 东方商厦

Metro City 美罗城

Shanghai Xuhui High School 上海市徐汇中学

Shanghai Industrial Mansion 上海实业大厦

Sherg'ai Mansion 圣爱大厦

XUJIAHUI SAINT MONATIUS CATHEDRA 徐家汇圣依纳爵主教座堂

Shanghai Jianguo Hotel 上海建国宾馆

Jewel Garden 尊园

La Cite 莱诗邸

NANDAN EAST ROAD

NANDAN ROAD

Shanghai Xuhui People's Government

Fountain Garden 福源汇

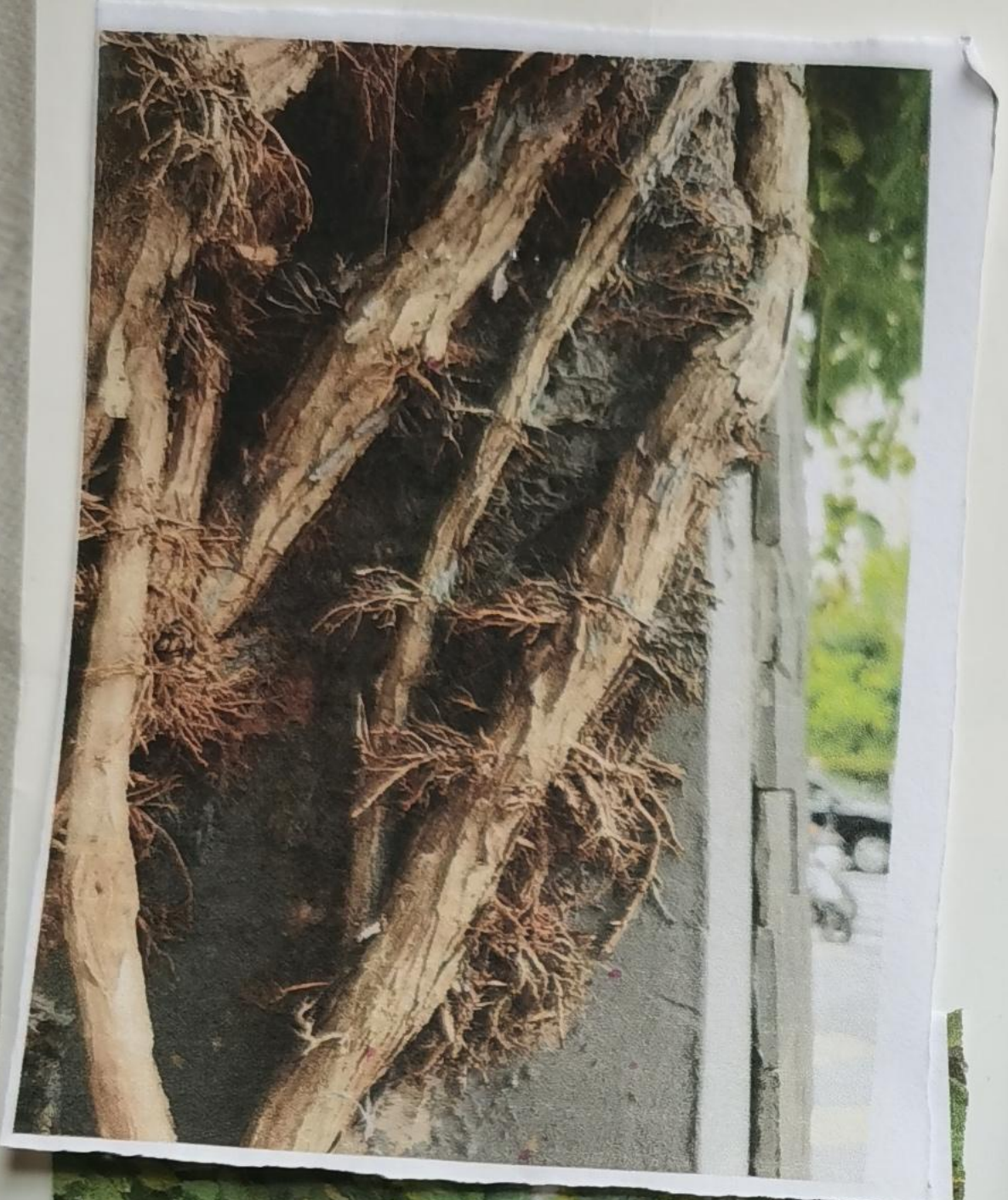
Jinxuan Apartment 金轩公寓

Jiahui Plaza 嘉汇广场

Stewart

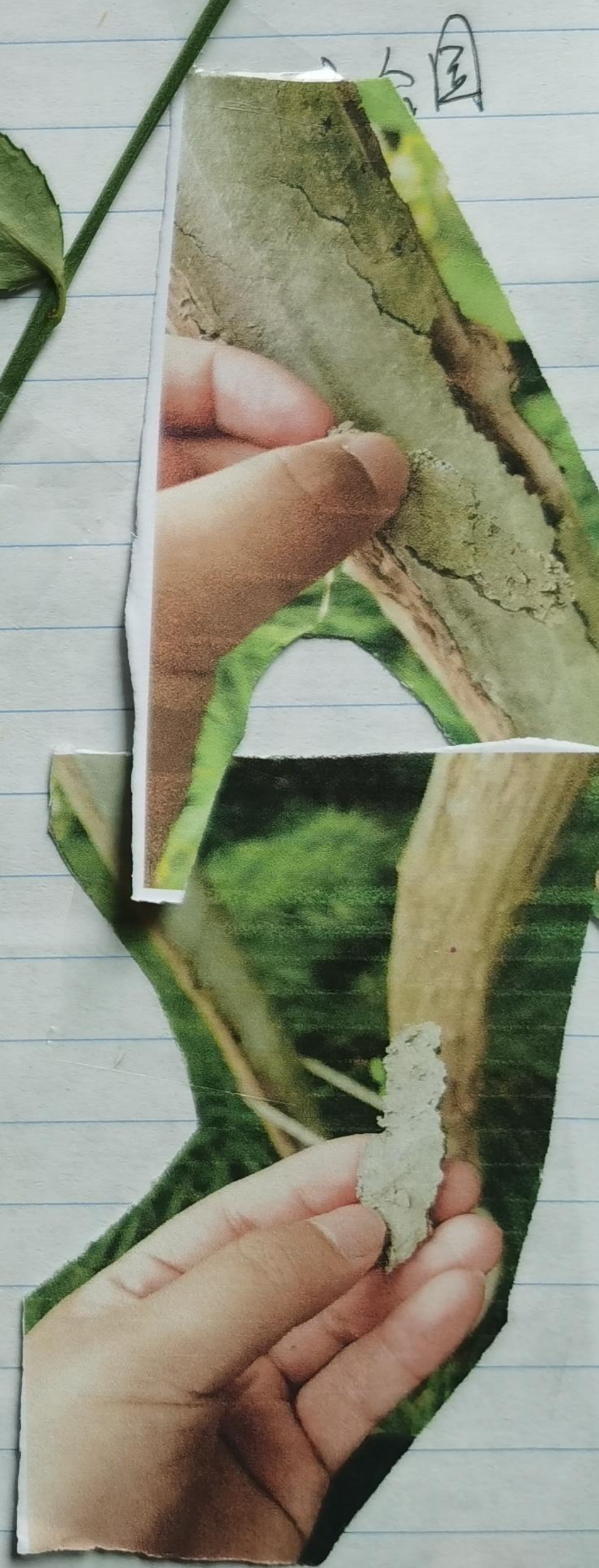
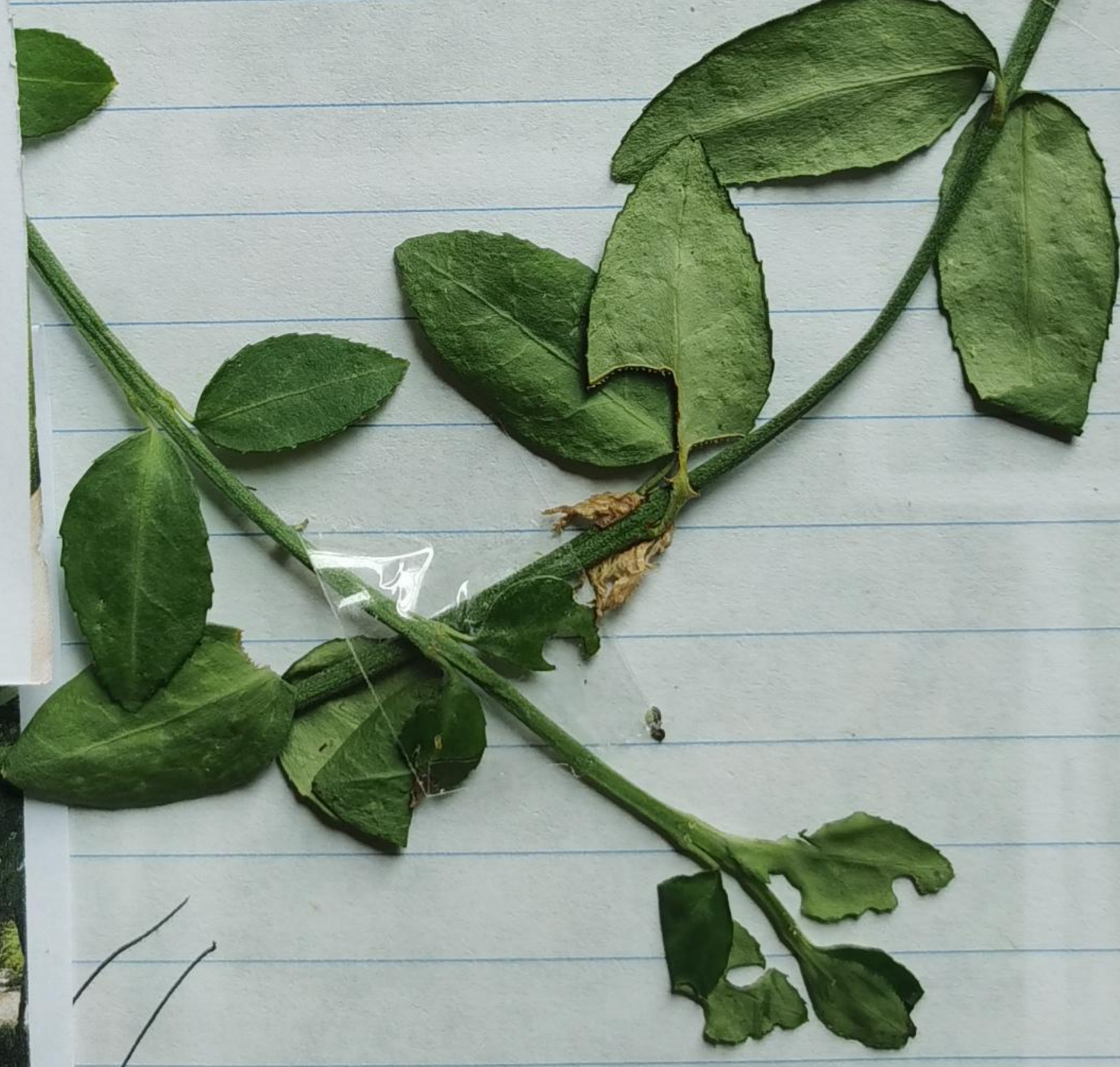
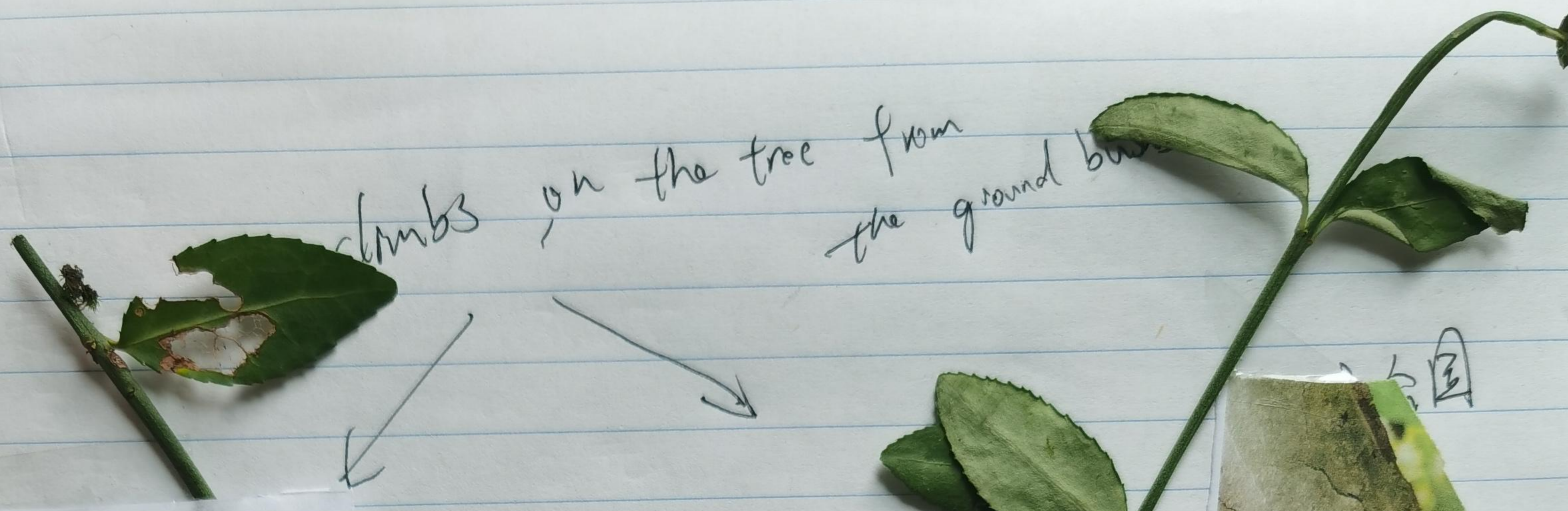


2



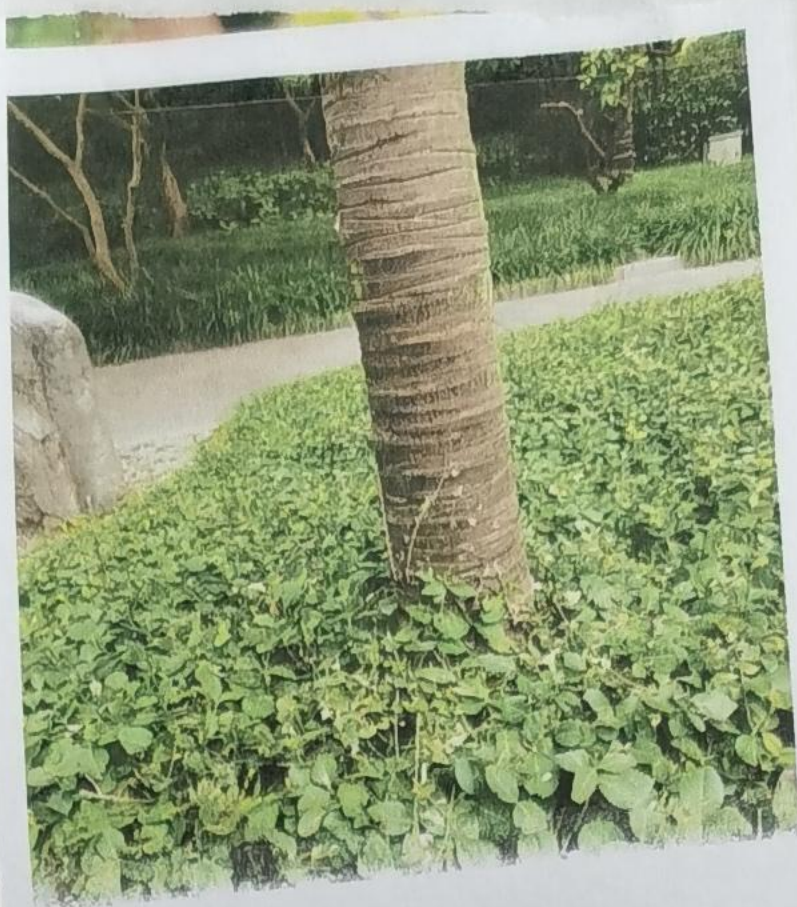
Green 绿色藤萝类的植物 从地上的绿丛中攀到树干上 20~30cm

climbs on the tree from the ground base

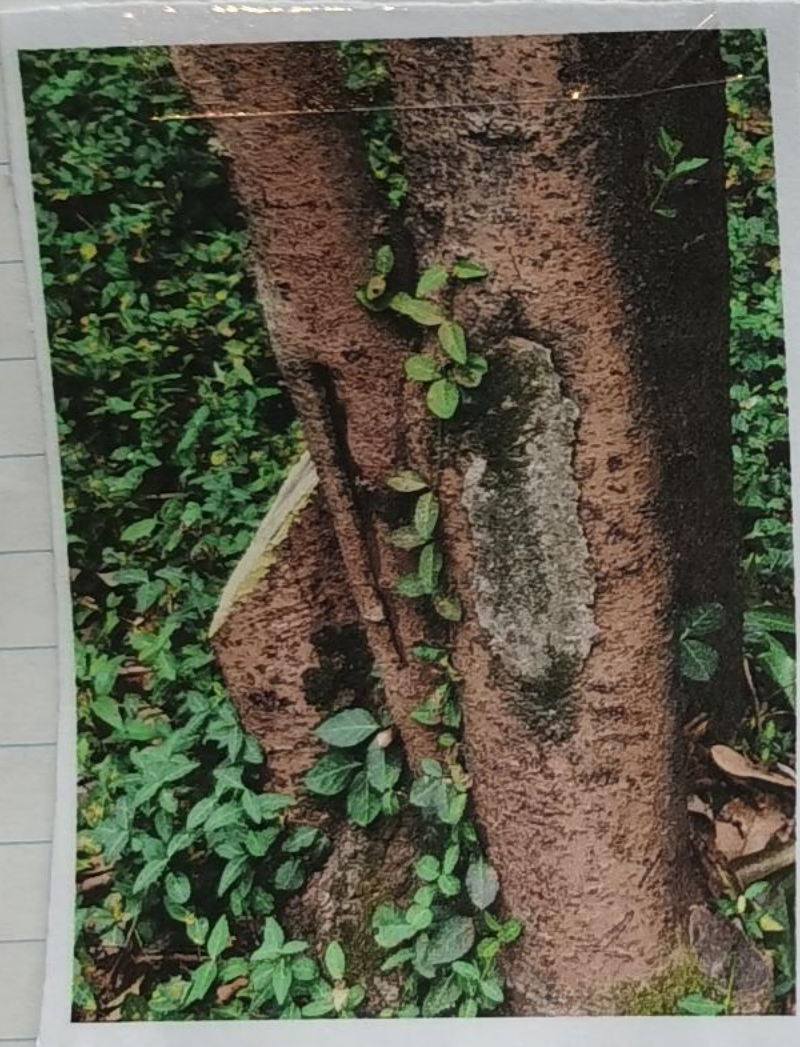


rope ties up a tree.

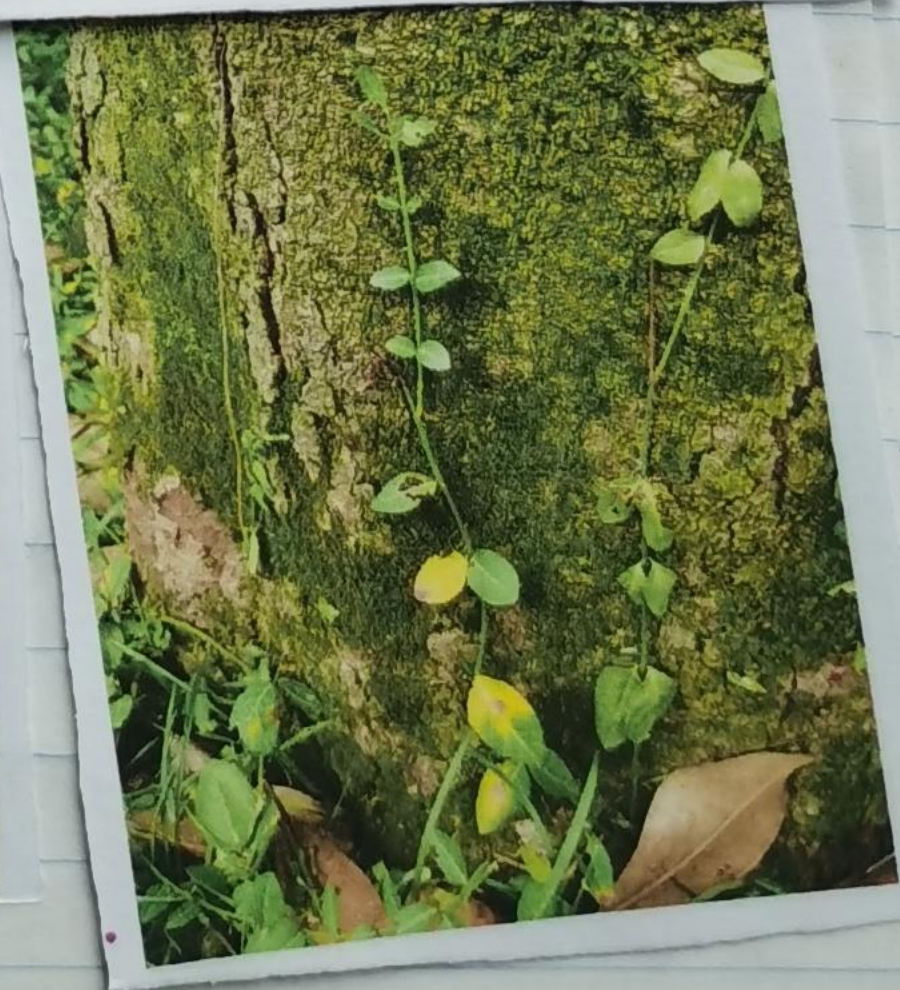
1 branch is kind of cut up and printed with concrete kind of stuff



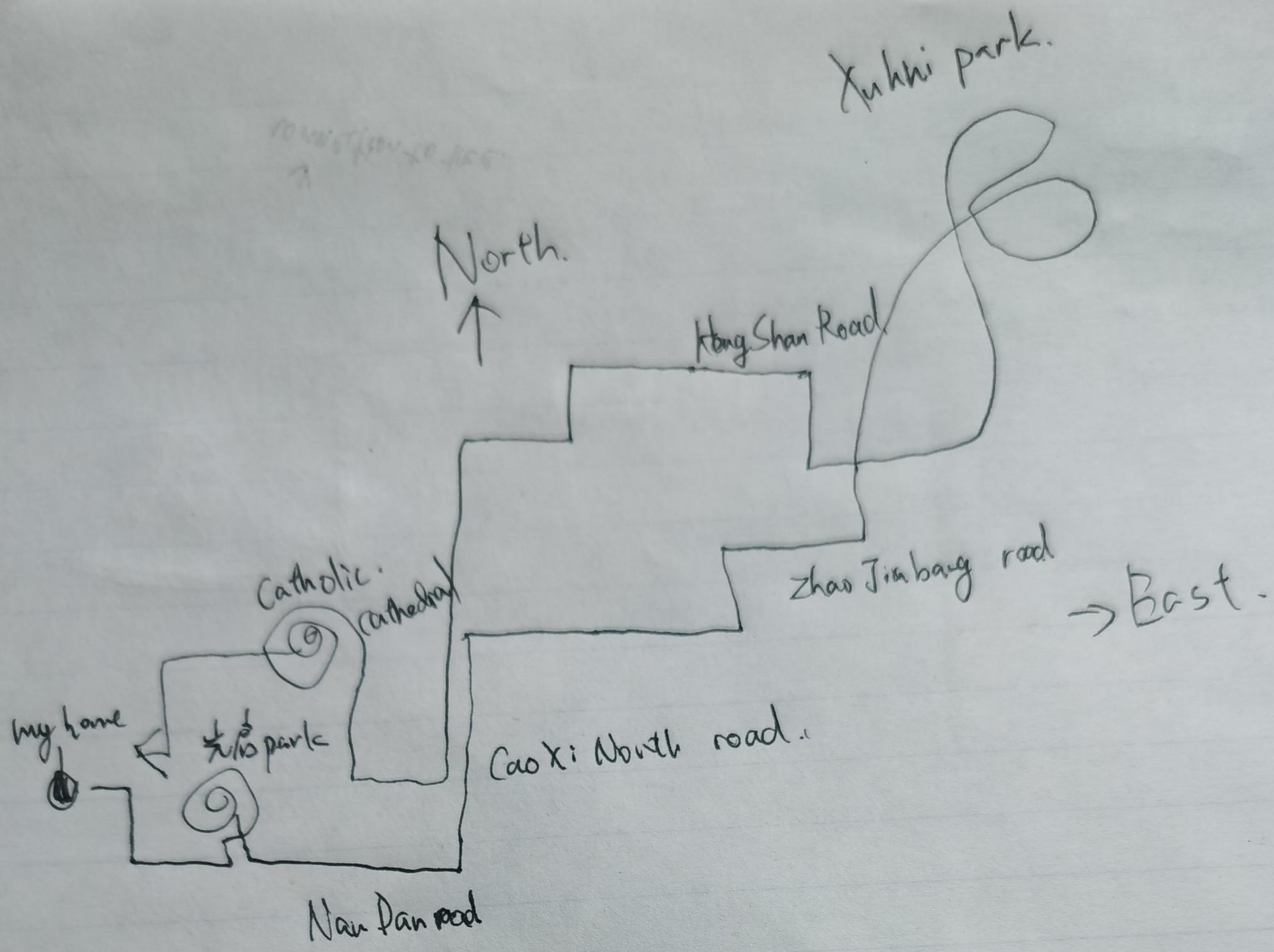
*Viburnum odoratissimum*  
Ker Gam!



1/2 Park.  
Tree creepers  
on palm tree  
and  
Camphor?

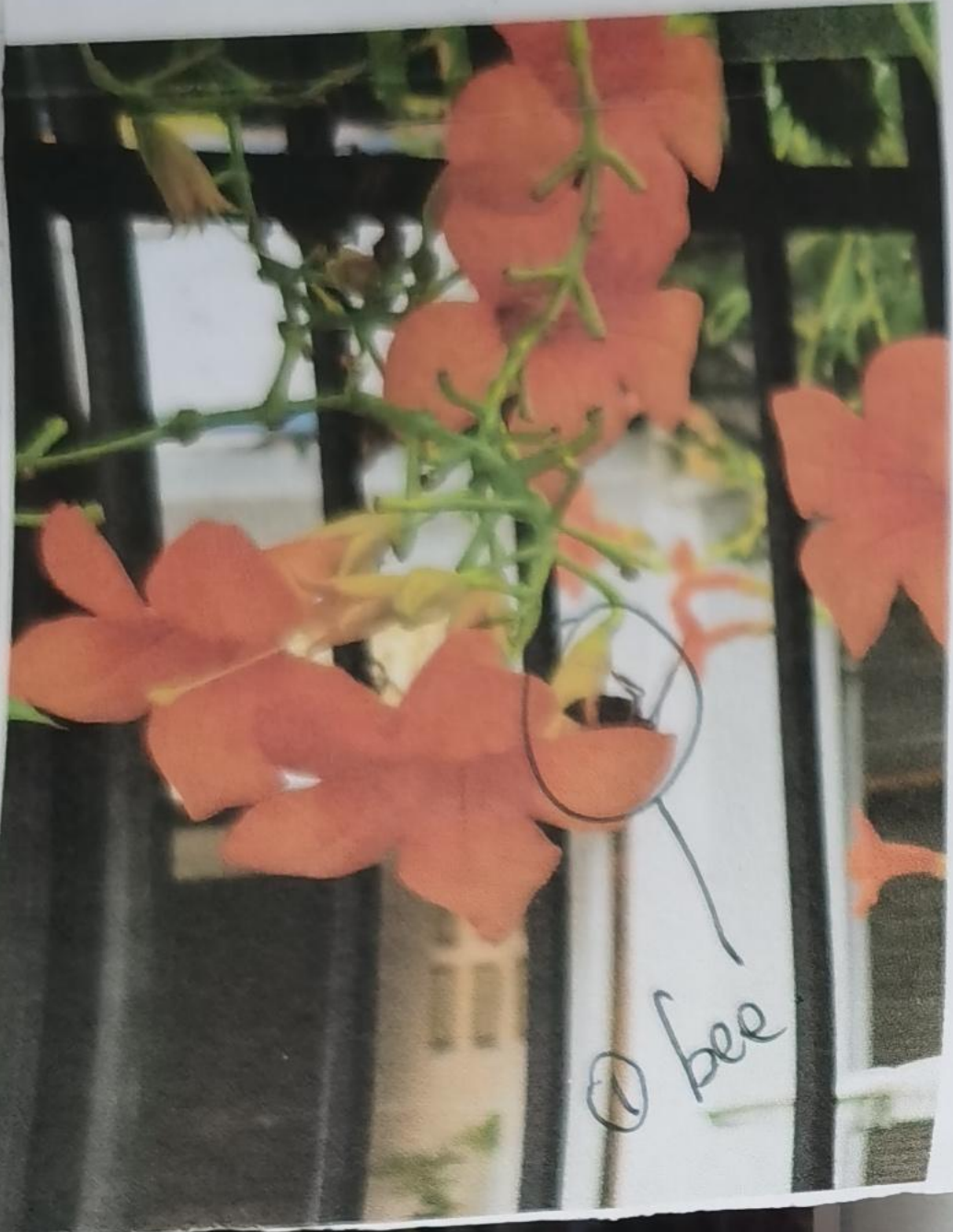


connection to tree.

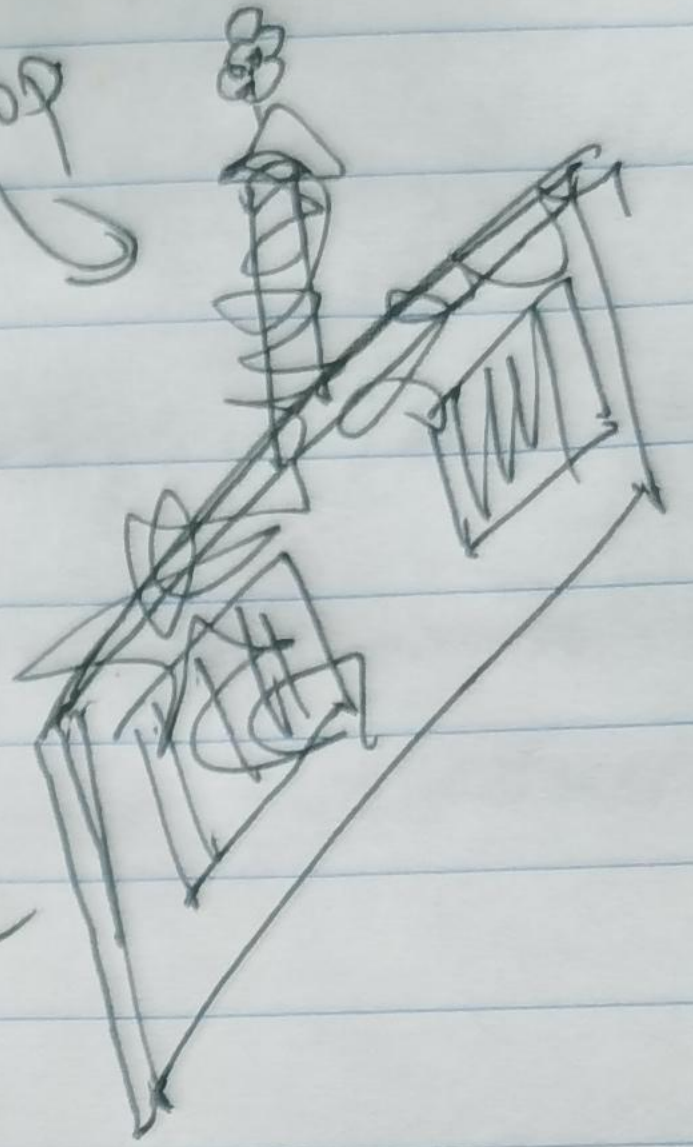


(Campus)  
 on Super 100  
 / Cao Xi North road  
 Xuhui park

Just realized  
the  
Creeper climbed  
all the way  
to the top



bee



the same bee  
crawling inside  
the trumpet.

光启公园

Leaves Guang Qi Park.

to the modern street

Nan Dan Road → Cao Xi North Road.

↓  
Zhao Jia Bang Road.



Plugging in Greens  
to the pole of the  
bridge. Looks good.  
but I ~~wouldn't~~ wouldn't call  
it green, but a decoration.



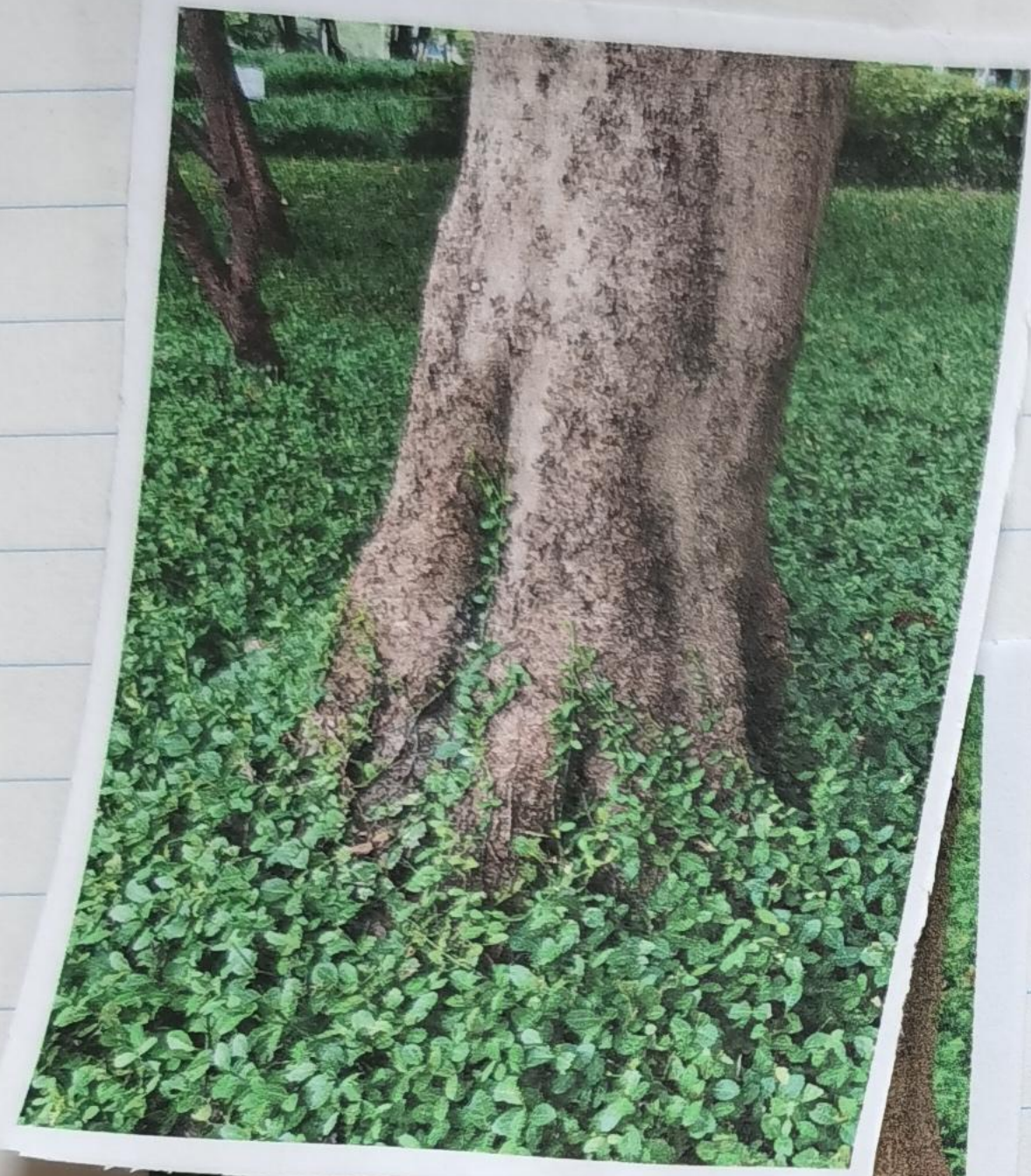
using Greens, trees to set barriers for  
the road.

Hope we can keep them before constructing.  
instead of replanting.

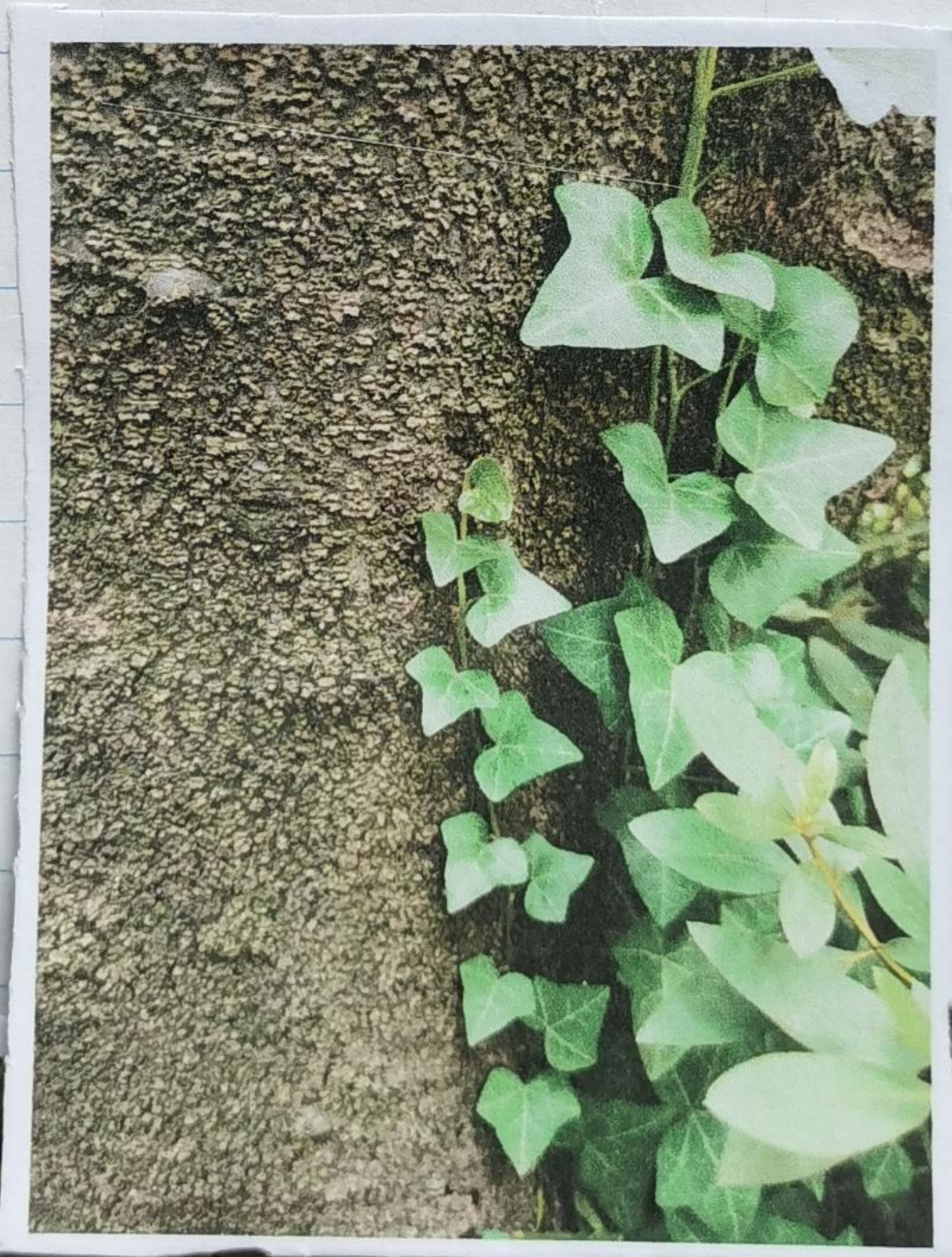
little tree?  
struggling out  
through the metal  
plates above the  
gloomy, damp space.



Xin Jia  
~~Hui Park~~  
next to Hengshan Rd.  
and  
Zhao Jia Bang Road

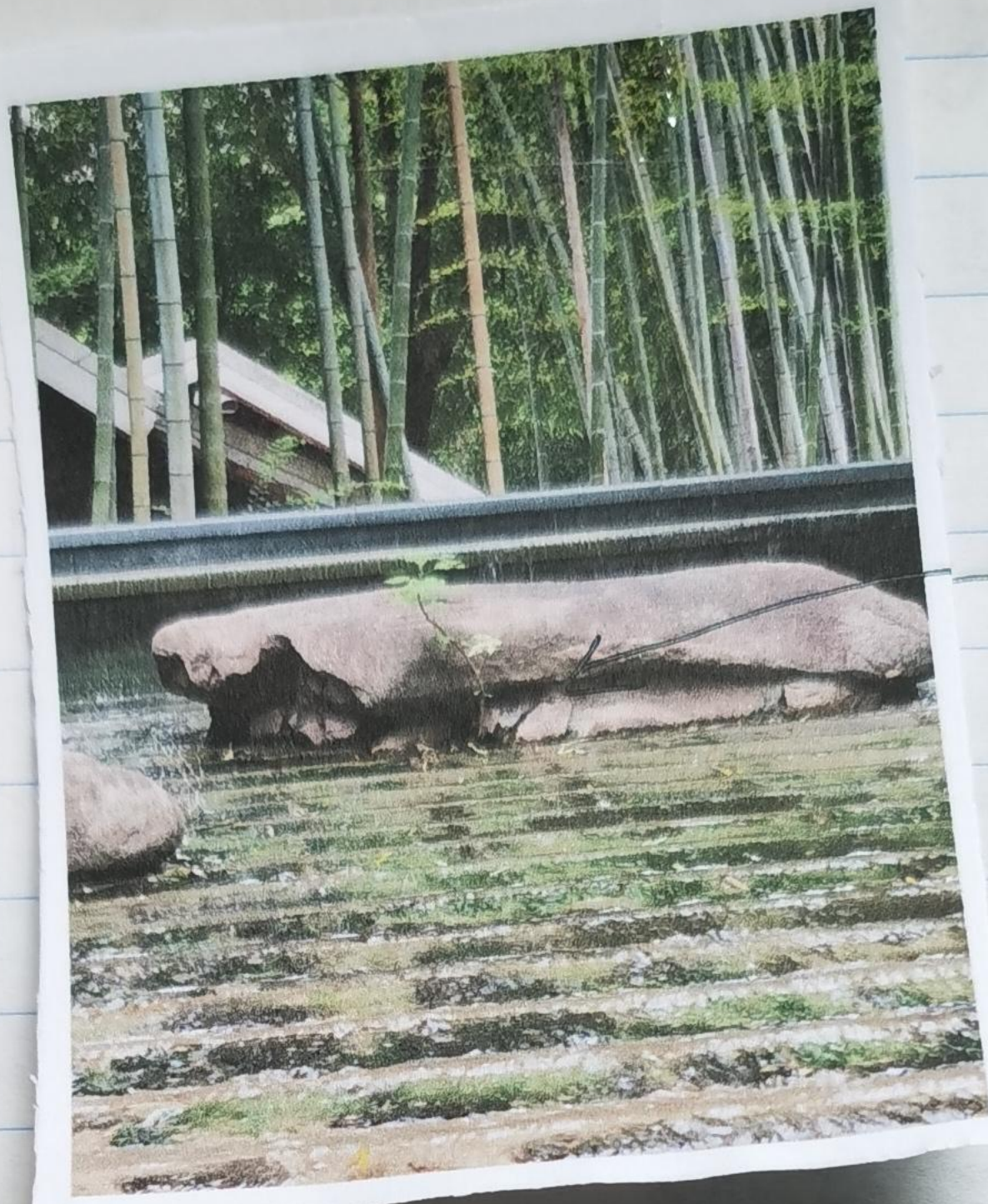


(Creeper from the bushes  
on tree. same kind.)



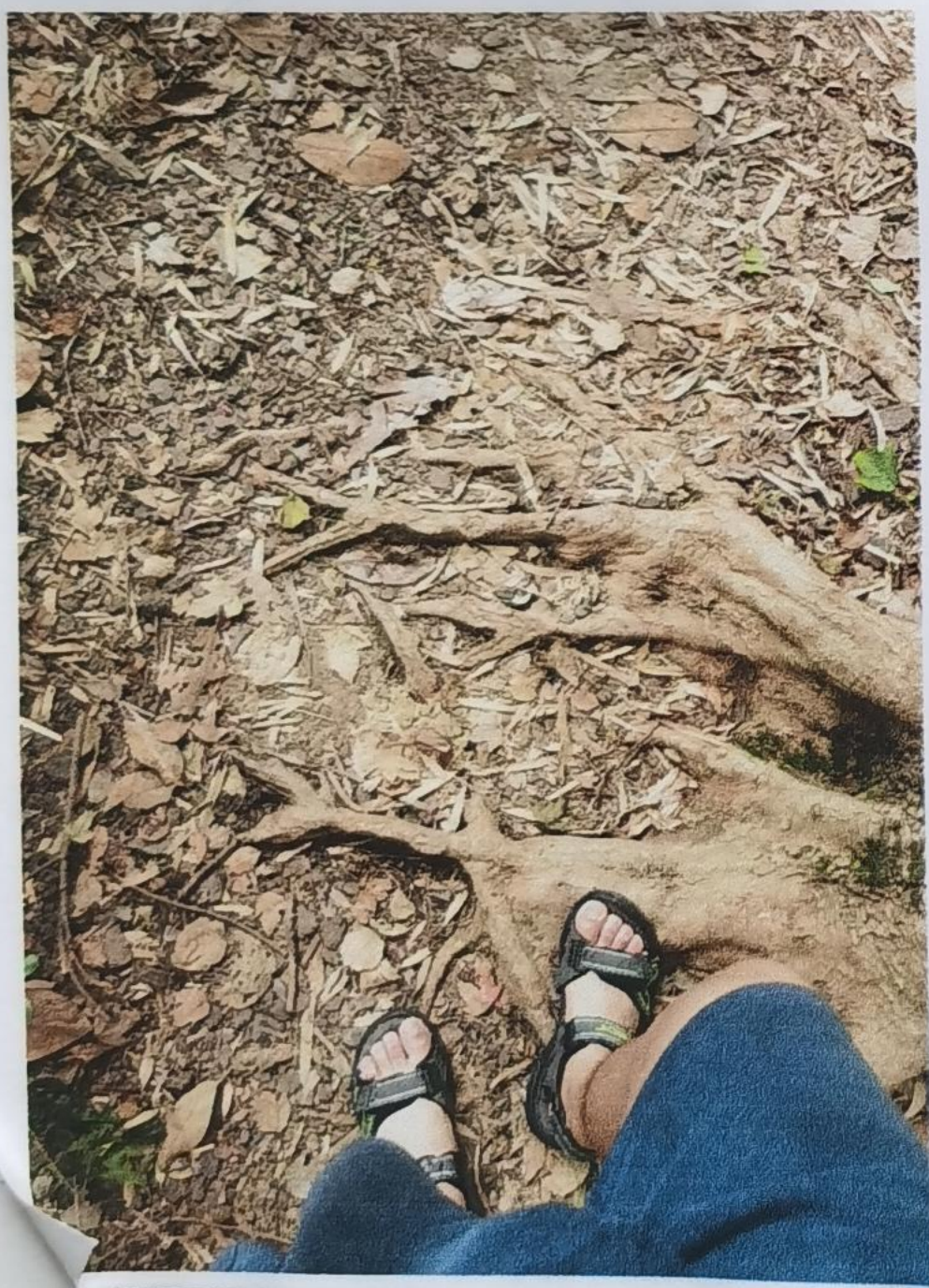
littles greens, grass coming out.  
Between the rocks





the little treelet -  
breeds out behind the rock  
and stands in shallow  
water.

greens growing out -  
from the drain.



When's the last time  
I stepped on tree trunks  
and muds, last time?



moss covering a bit  
of the tree.

thanks the humidity  
of shanghai

A family of two boys.

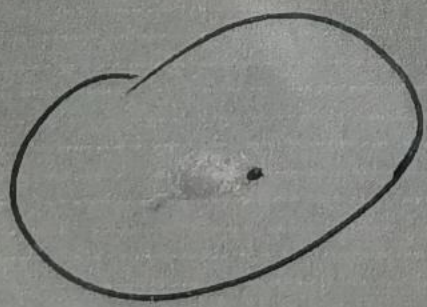
Their own words : Breath in <sup>o</sup> It's fresh.  
air of the NATURE <sup>o</sup>

sky bridge.  
above the park  
can see the views  
in different ~~at~~  
height.

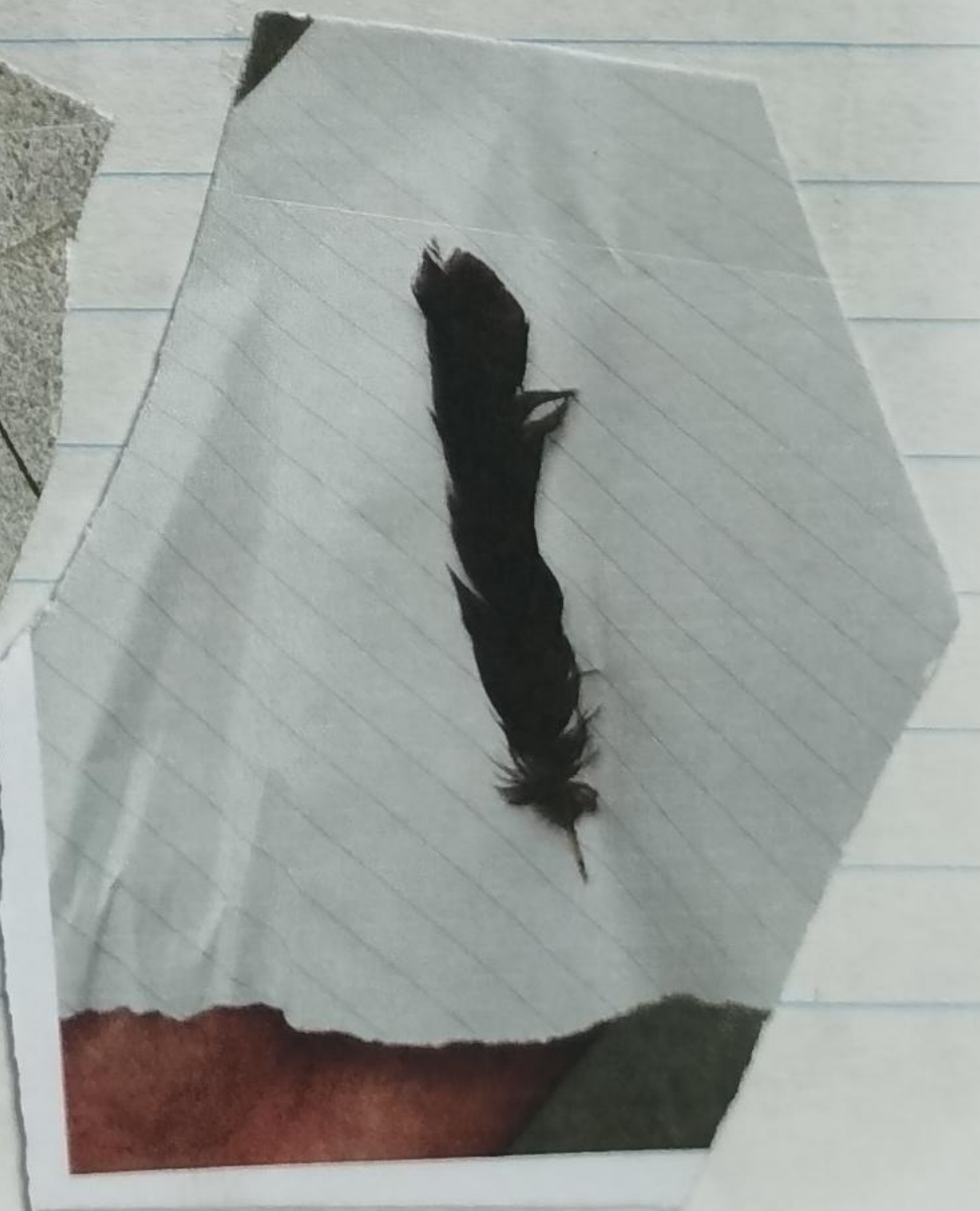


black swans  
feeded ~~by~~  
~~at~~

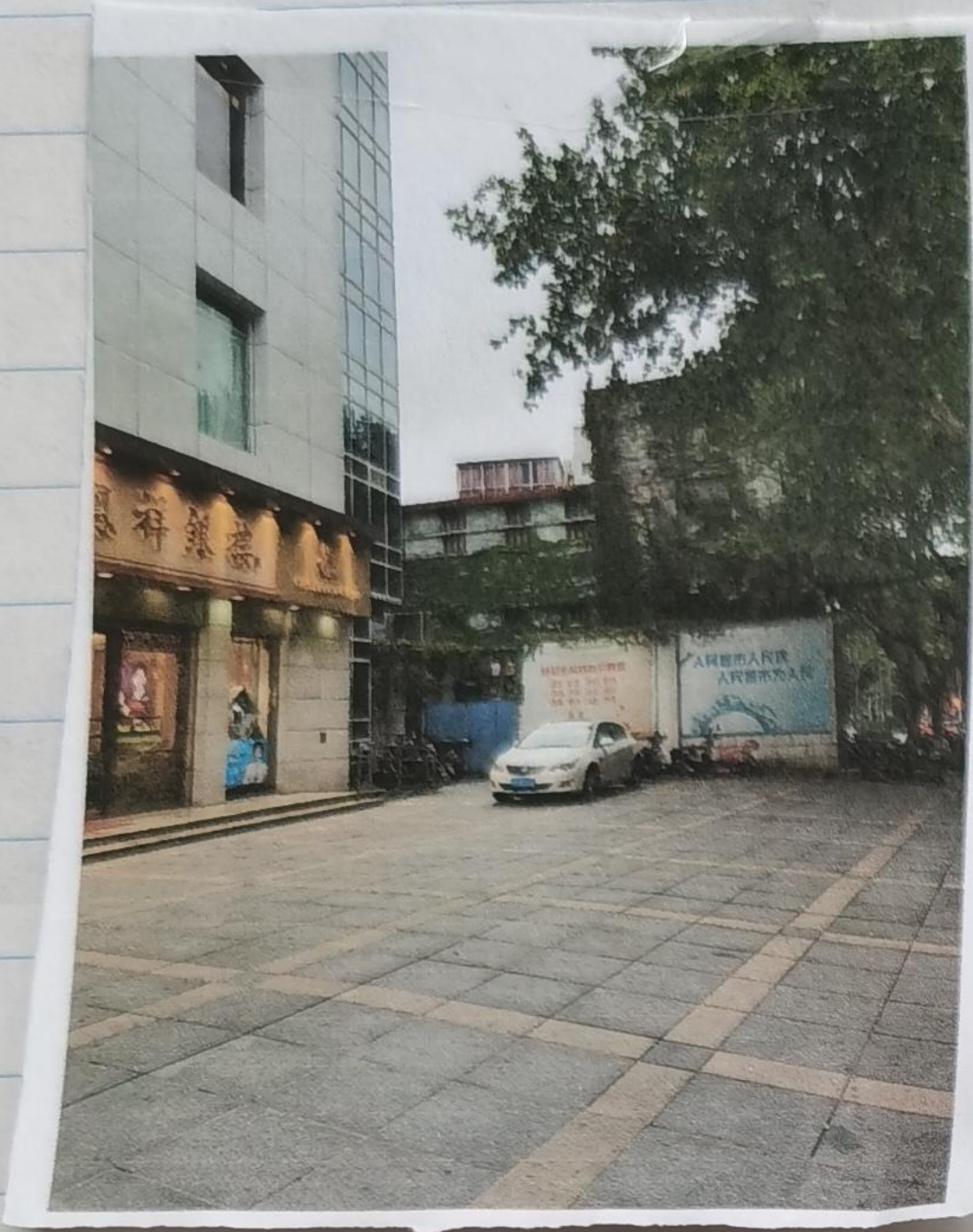
There it is  
the turtle.



feather of  
bird. found on  
ground. Crow?



Out of Xujiahuai Park. ~~Back to~~  
to Hengshan Road.



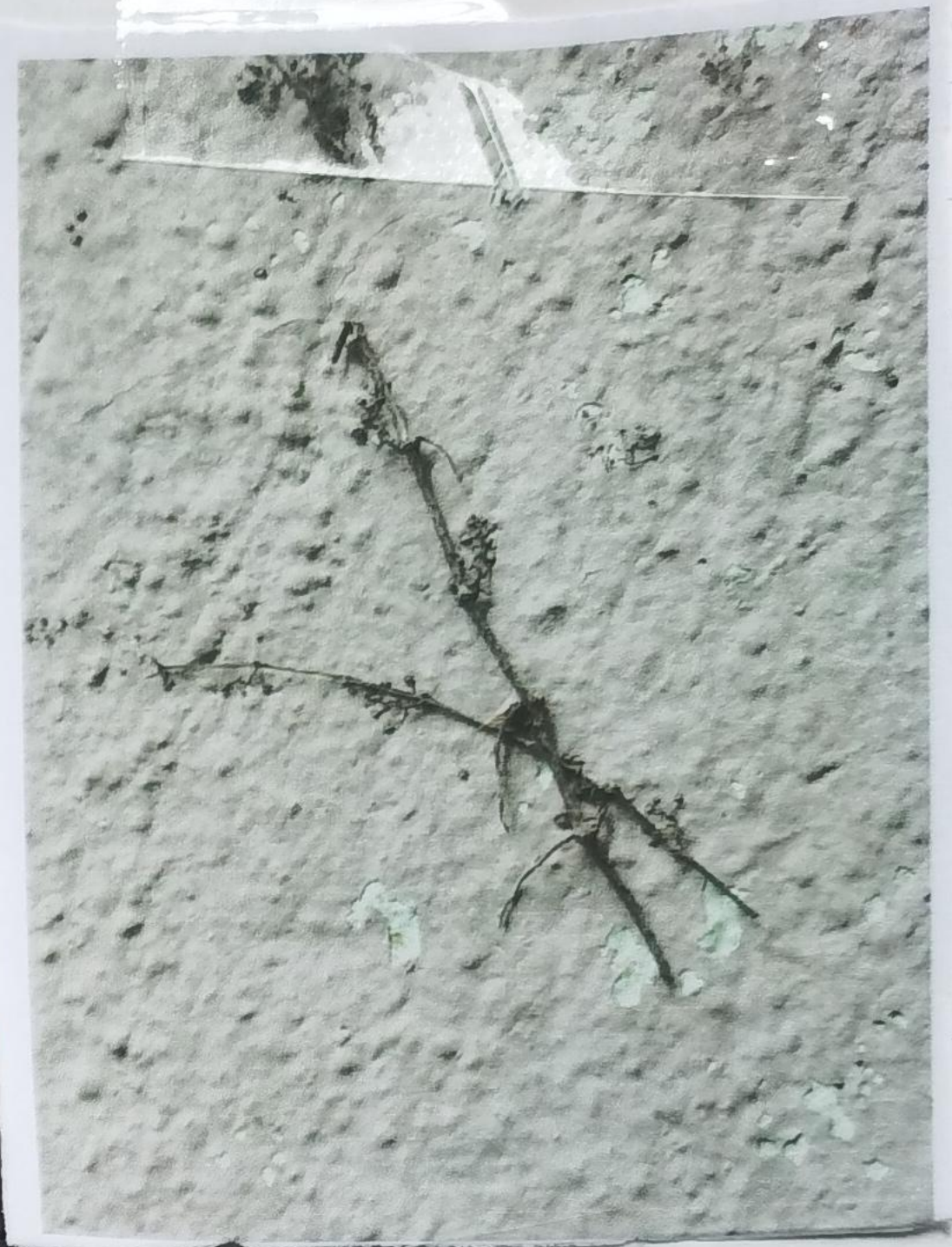
Creeper on the old building at the cross of ZhaoJia Bang Road  
and Tian Ping Road.



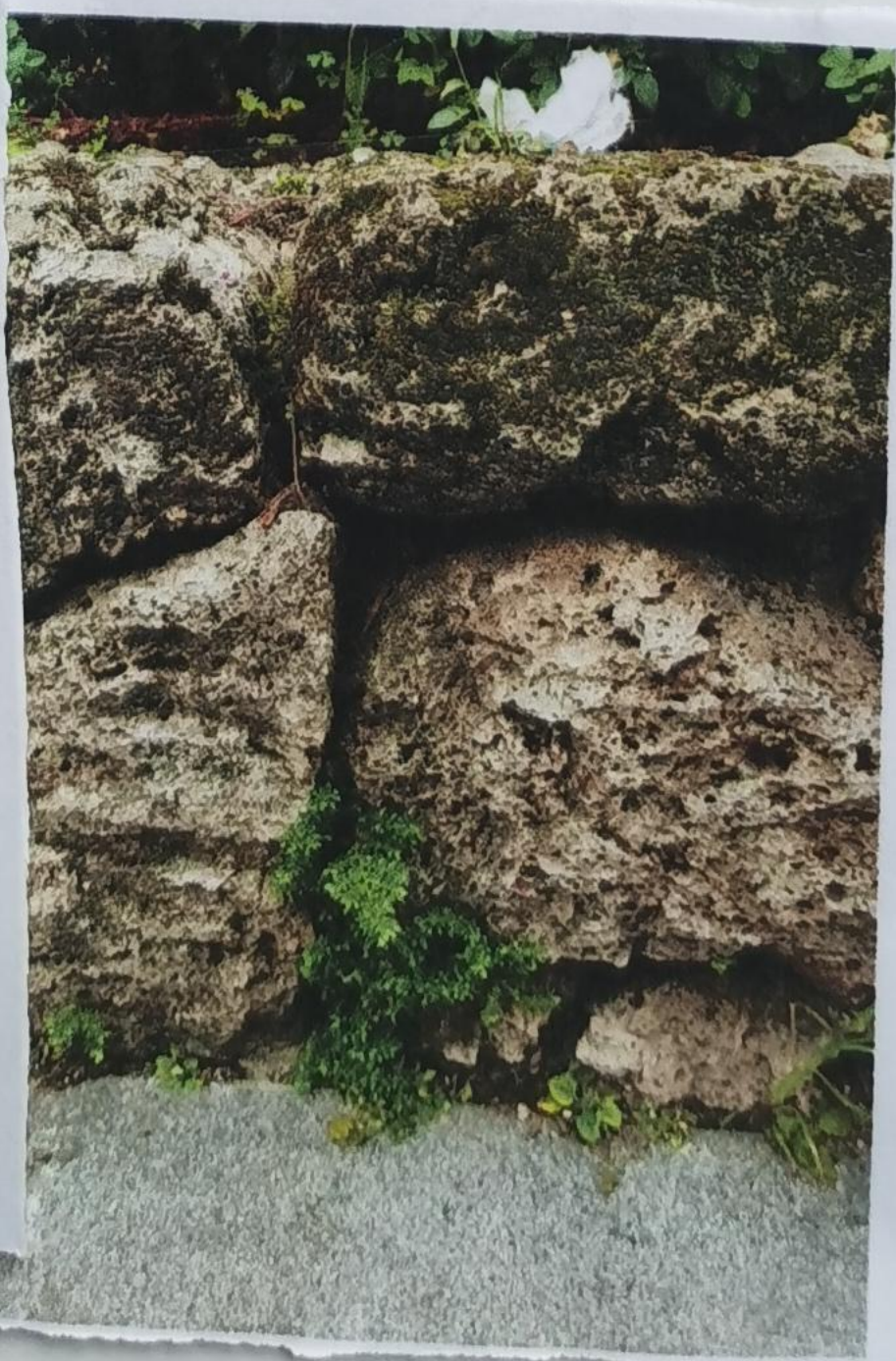
dried. ? dead?  
creepers.



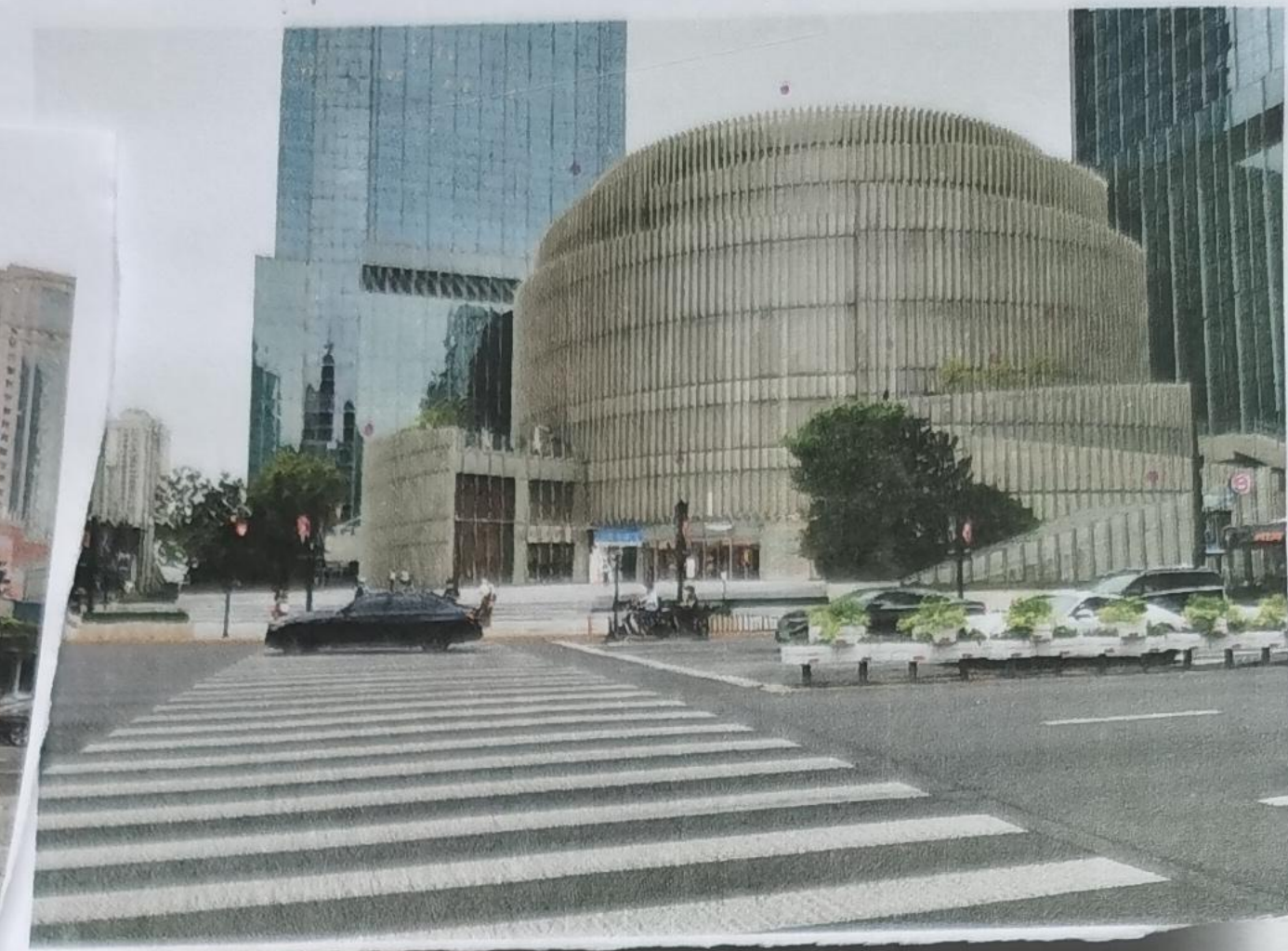
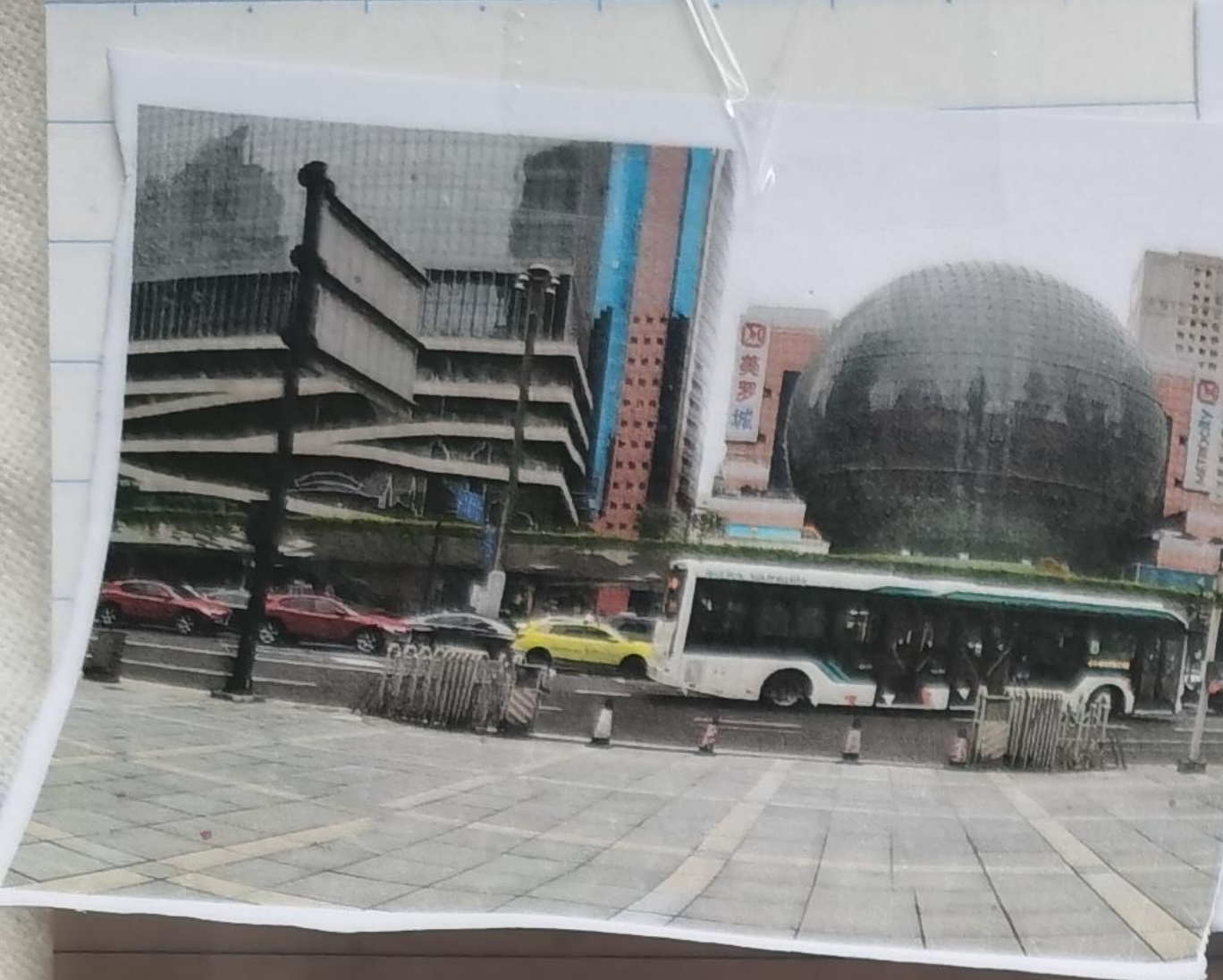
Creepers on a  
old three-story  
house.  
Trumpet creeper!



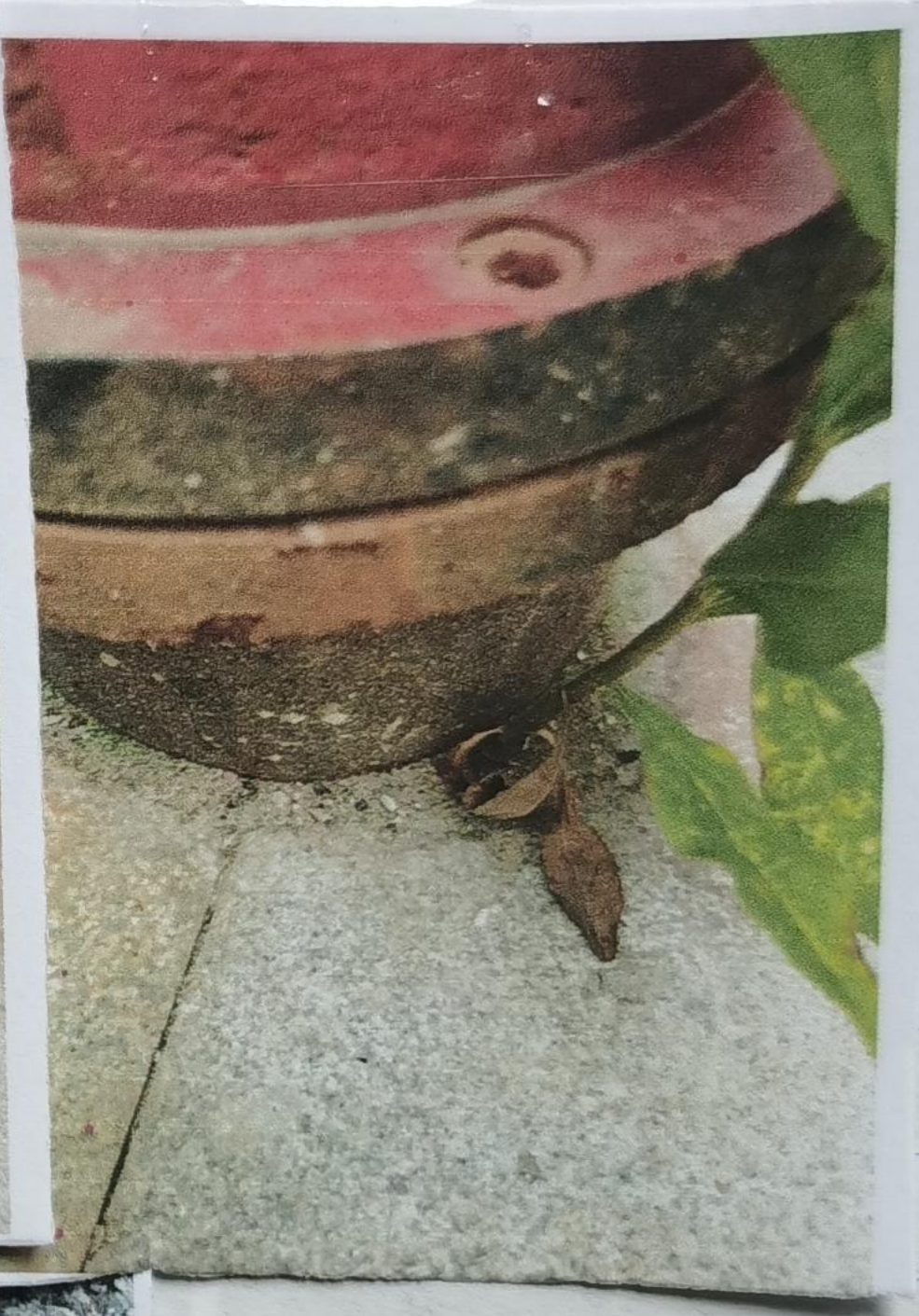
part of  
dead. ✓  
so hard to pull off the paint.  
creepen. it's glued to the wall.



greens growing out from  
the rocks through the mud behind



Greens planted along the mall to make the view "healthier".



greens came out of ~~no~~ no where through the concrete and under the fire pole.

All the Catholic Cathedral greens doing covid test.

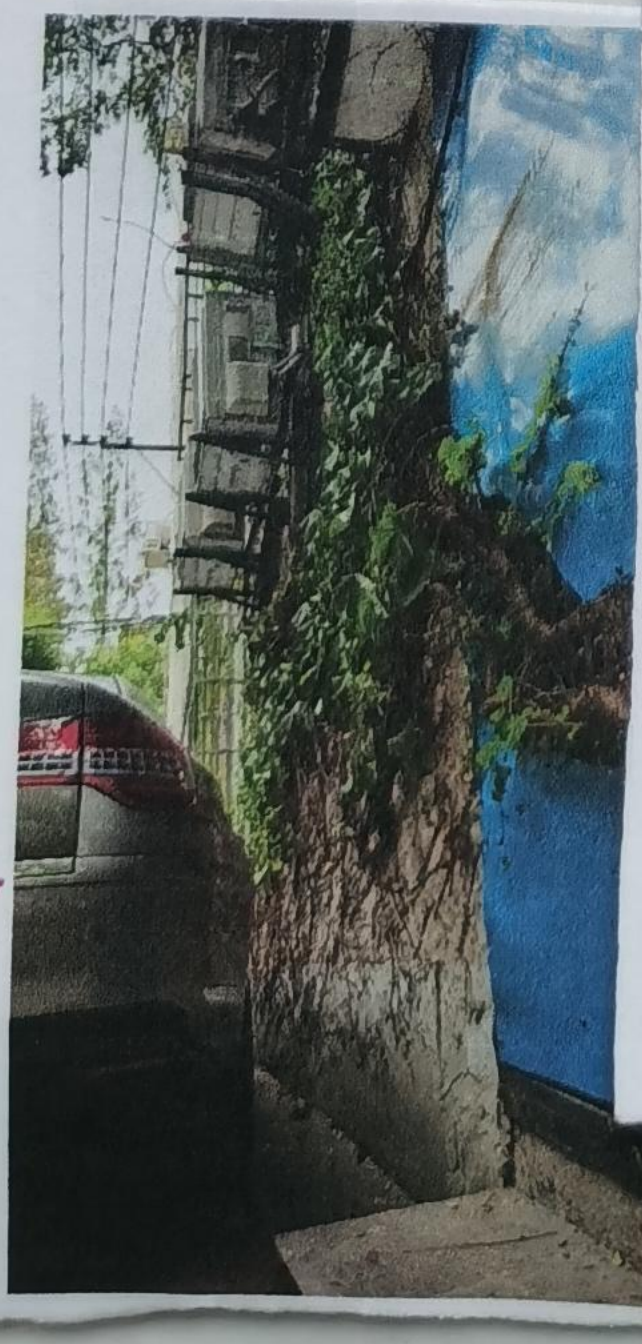
Finish doing. could test. I turned into a small valley. next to the Cathedral.

Aiming for weird. and naturally growth. greens.

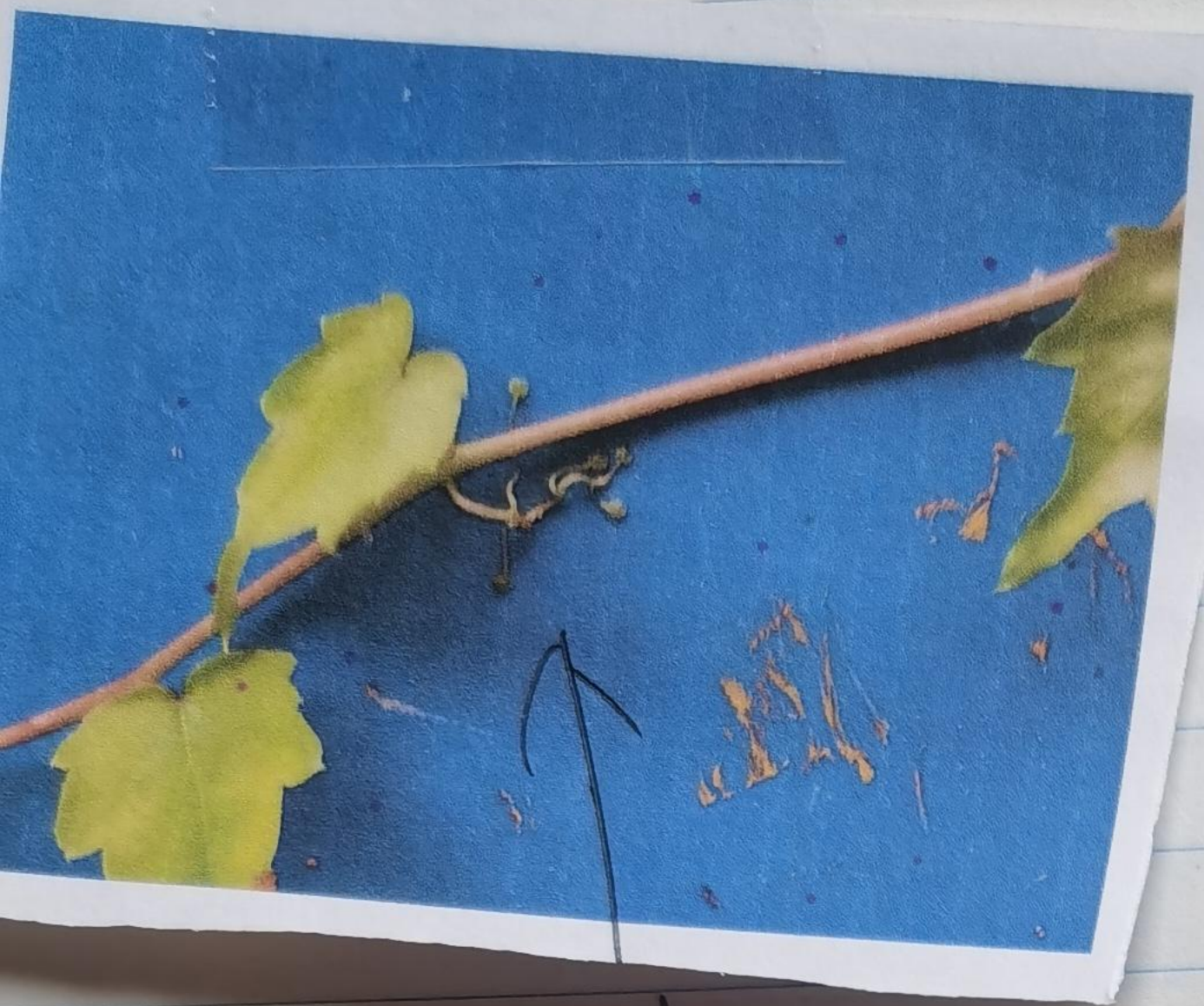


greens surrounding the water pole (old one)

the creepers covered a whole wall of the residential building



Where the root starts behind a metal plate



it died. the second day  
I picked it off.

How the creepers sticks on the metal plate.



The amazing part.  
is they even crawled  
upto the consturting  
structure., How fast  
can they grow.



# Thoughts and plan.

I mean.

We live in, most of us - lives in the city. And. most of us are gonna have to deal with the situation that. Its hard to find "true" nature. near we live. That's also the fact that I've been facing for years. Looking down to what others call "nature" in the city. Which are often the parks and decoration greens, that's been planted and cared by human on time basis.

After the exploration. I had this feeling, actually already had it during the exploration. Is to try not be so "harsh" on these greens, these urban greens. Some might call me silly. But I think. a park, a tree, a little even a weed. Struggled their way out from the "Jungle" of concretes, all kinds of pollutions, even human's ~~its~~ harm. They fought their way out and. entertains, gives the citizens an empression of "Nature". That's "nature" enough for me. Atleast I'd say I pay my respect to these greens.

For the next exploration, I'd like to go deep ~~to~~ into some old valleys or old neighbourhood. where usually we can find some cool greens that's either wild, weed, or the residents plants that has been left alone. or unfixed. that has been growing on its own for long time. Like the creepers or other cool plants that's has grown or attached ~~to~~ to artificials. And I bought my own creeper. I'll try grow one on my balcony see how it goes, maybe give it a route or just a stick or wall for it to grow.