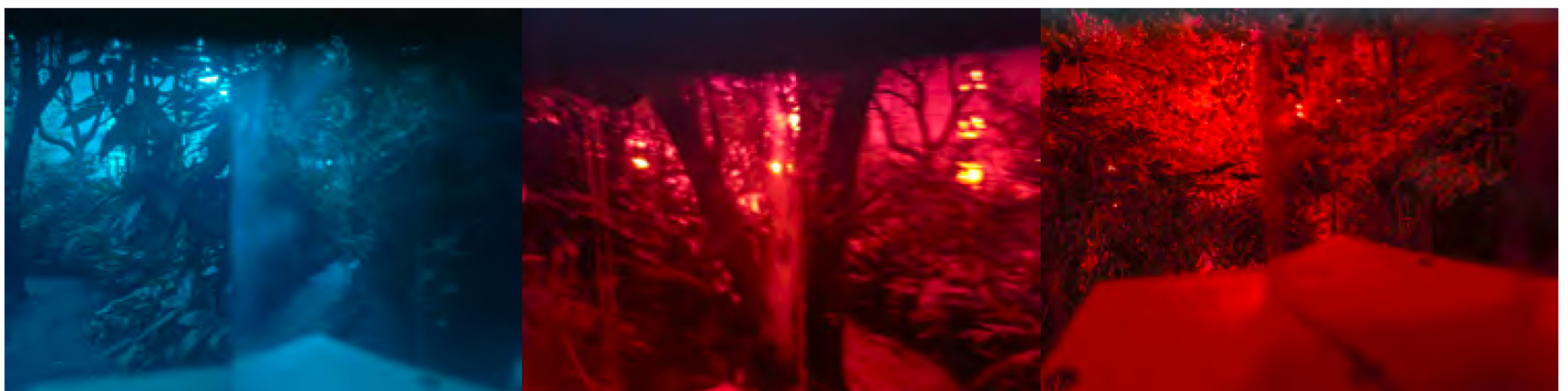


Quick Prototyping

As I had noticed that many creatures have eyes on either side, I used mirrored paper to move the view from either side to the centre of my eye. Using transparent coloured paper to change the colour.



- My field of vision seems to be wider with it on, but taking in information from both sides at the same time can be a bit overwhelming for the human eye.
- Sometimes I focus on one eye only
- Because I see both sides, I ignore the part directly in front of me.



- The blue one does not seem to be as clear as the red
- It seems to be more sensitive to light in this case
- In this monochrome picture, I seem to notice the use of the sense of hearing more than usual