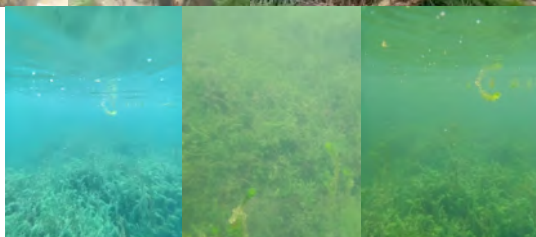
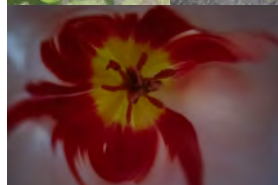




New Lives : Plants on plants



Underwater



Inside the flower



Quick Prototyping

As I had noticed that many creatures have eyes on either side, I used mirrored paper to move the view from either side to the centre of my eye. Using transparent coloured paper to change the colour.



- My field of vision seems to be wider with it on, but taking in information from both sides at the same time can be a bit overwhelming for the human eye.
- Sometimes I focus on one eye only
- Because I see both sides, I ignore the part directly in front of me.



- The blue one does not seem to be as clear as the red
- It seems to be more sensitive to light in this case
- In this monochrome picture, I seem to notice the use of the sense of hearing more than usual

Reflections

- The least amount of information I use, or notice, in my explorations is olfactory information, whether it is a lower priority for me in terms of information capture
- Some of the perspectives that you want to explore during exploration are difficult to simulate, such as the low flight of a dragonfly, or the perspective trajectory of some insects
- Perhaps in order to adapt to these different needs for survival, many animals and insects have different ways of dealing with light. They have different photoreceptors. Apart from the light, the position of the eyes, the processing of the image, etc. are all very different. The world as they see it is already very different from ours.
- Many new plants will grow on top of older plants, and it seems that there will be a closer exchange of information and sharing of resources between plants