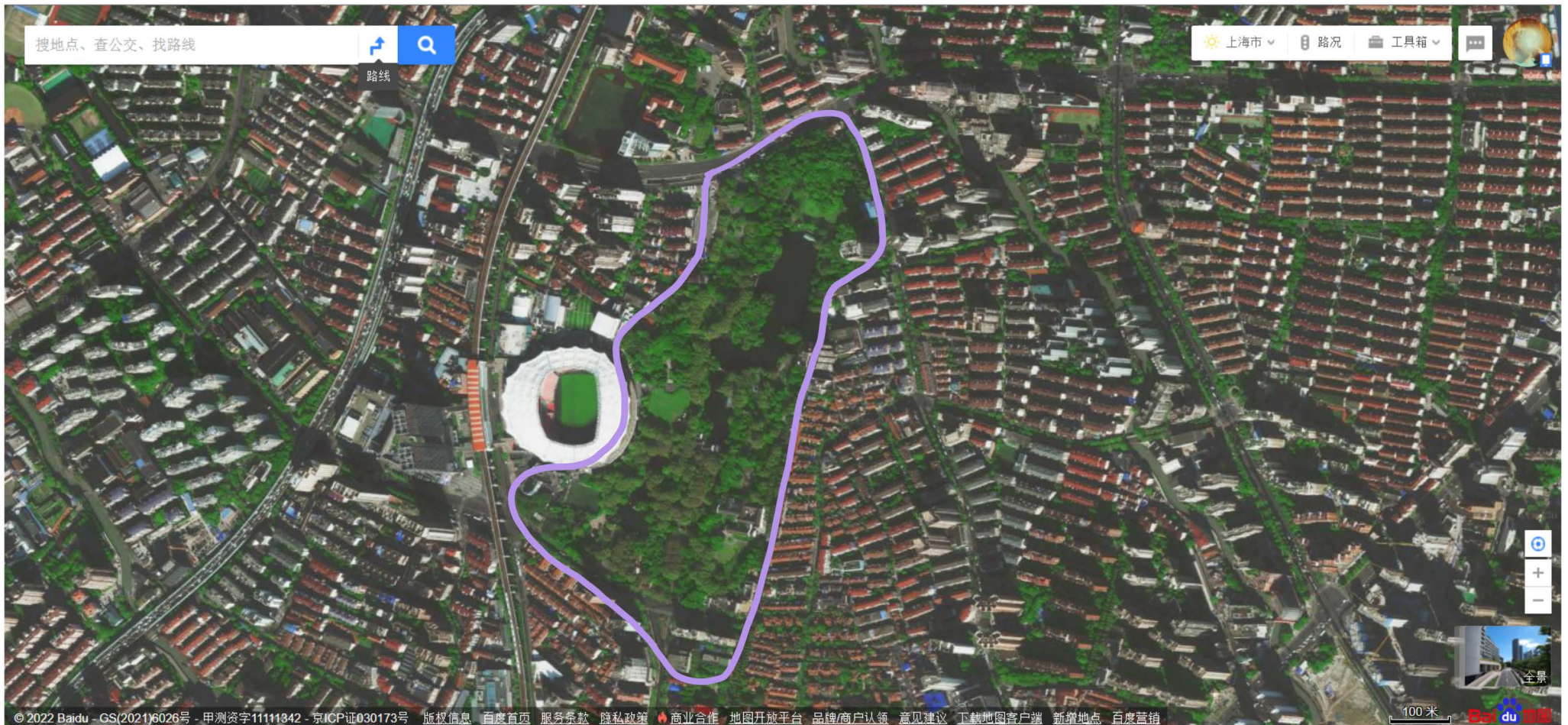


Exploration #02

Shanghai, Luxun Park

Typhoon and Rainstorm

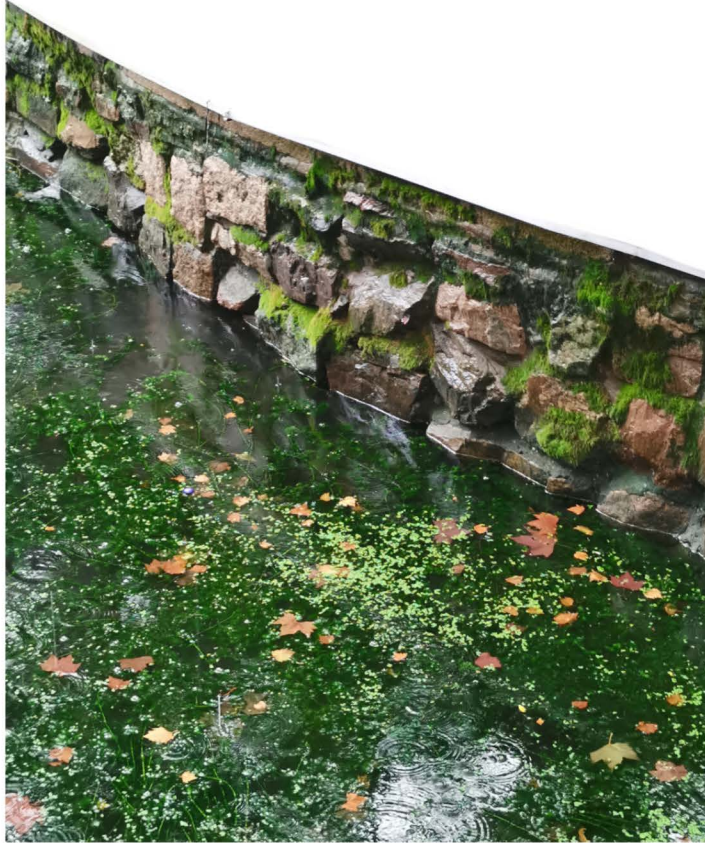
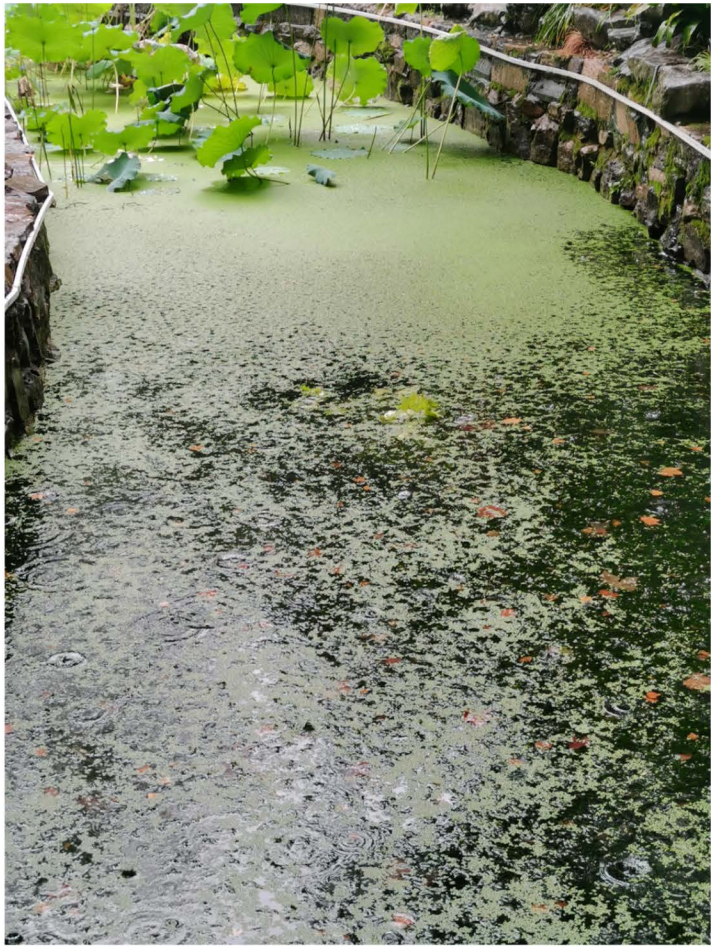
2022.9.14 13:30pm-16:00pm





At the beginning, the rain was so heavy that my clothes are all wet. Thanks for Jim Ge to let us take his car! Then he drove us to the park and meet other students.

o o o



At first, Saverio told us to use our sense organ to feel the environment around us.

See, hear, touch, smell ...

As I got close to the river, my eyes were attracted by the whole "green" on the water.

The moss 苔藓 was so closed to each other that the river looks like a green carpet.

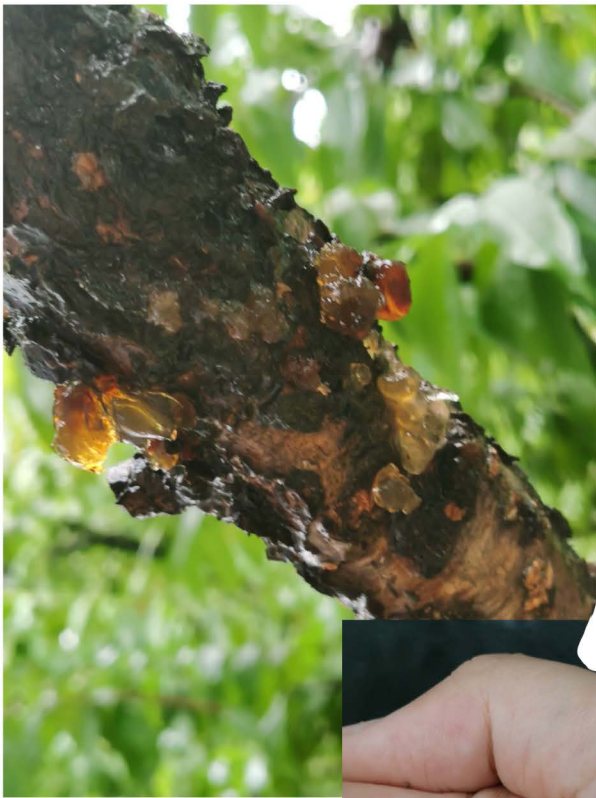
However, the moss was so far from me that I can't get any of them. So I can't see it, touch it, smell it clearly, that's so sad.

What if I make a Whatchamelie tool, like a long hand, to catch the things that I can't get? !?!?

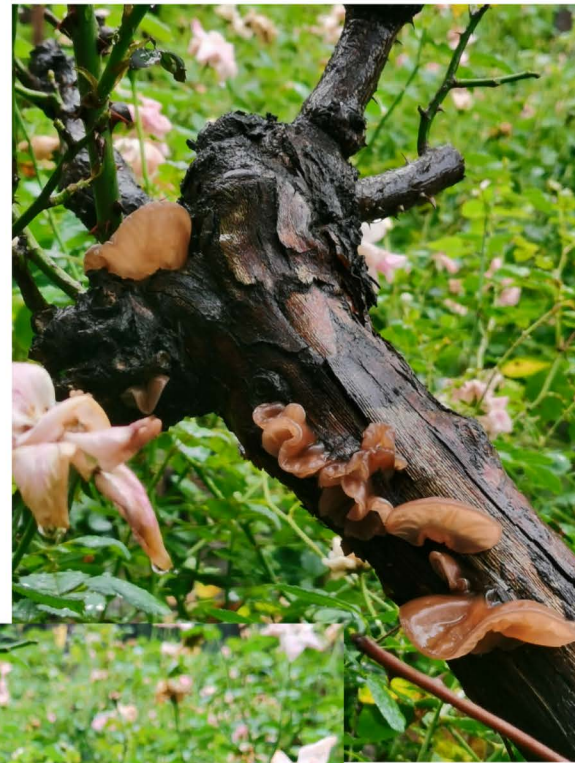


The color change of fallen leaves





Actually, I have never seen gum before. But this time someone just call "peach gum!". And then I met this kind of soft and cute thing for the first time.



Agaric 木耳

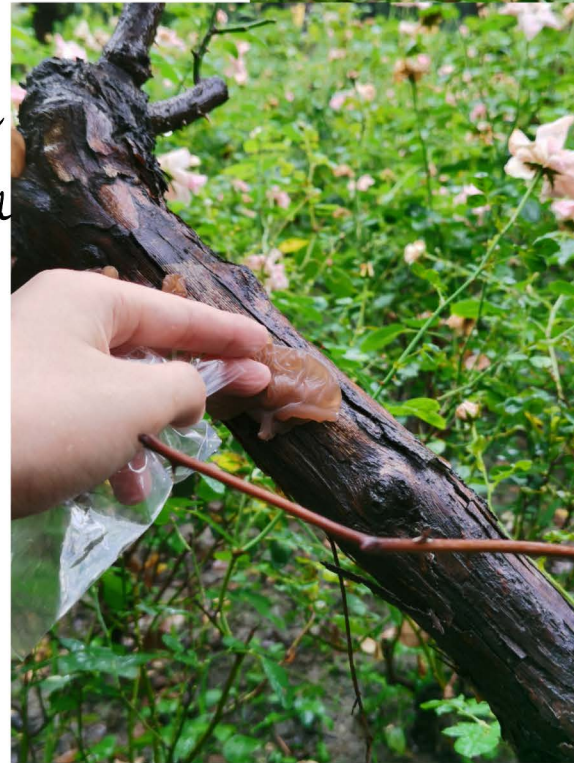
"野生木耳寄生于阴湿、腐朽的树干上，对木材有很强的分解能力，具有较高的营养价值和食用价值。"



Some peach gum can be cooked and eaten.

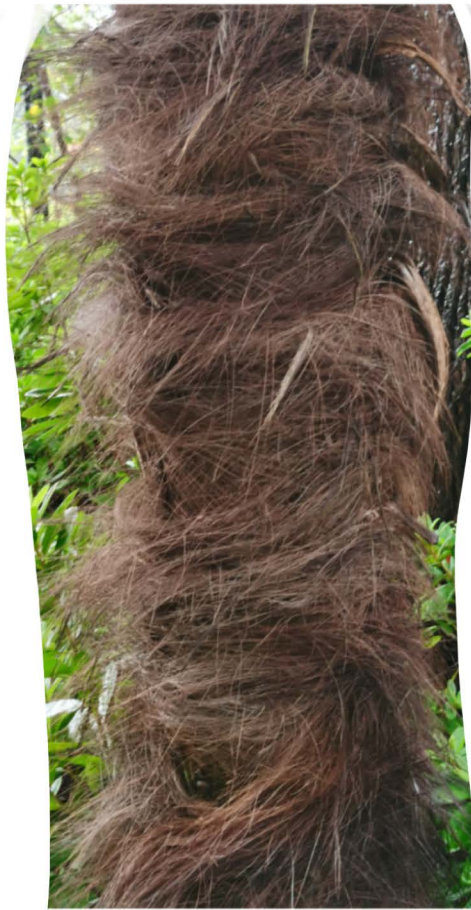
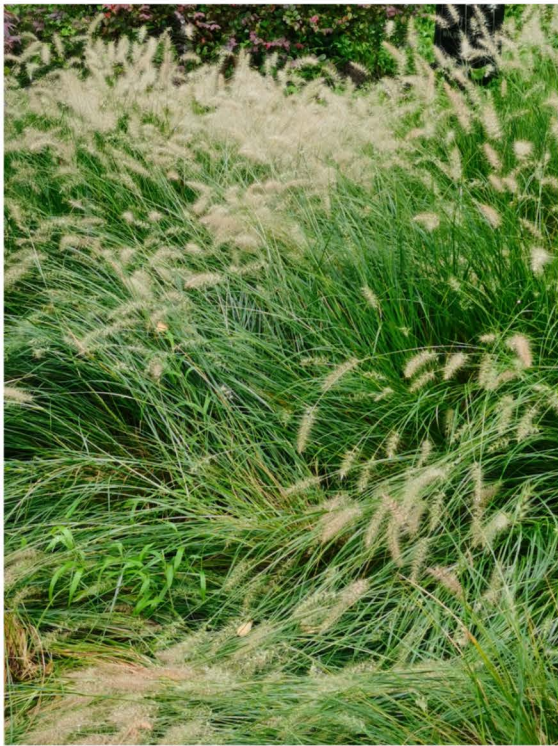


It can be easily peeled down from the tree!



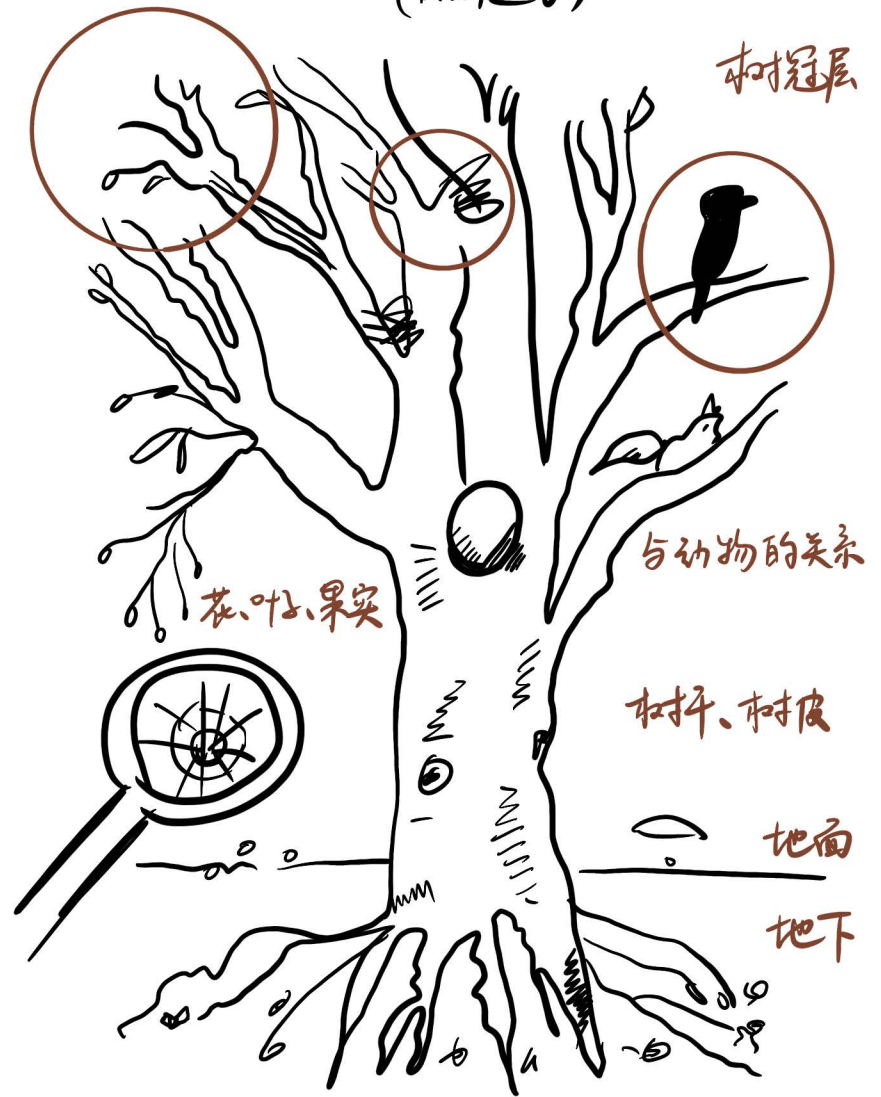
Passed by a tree branch, and saw some agarics which grew up on it. The upside of the agarics is smooth but the downside is a little rough.

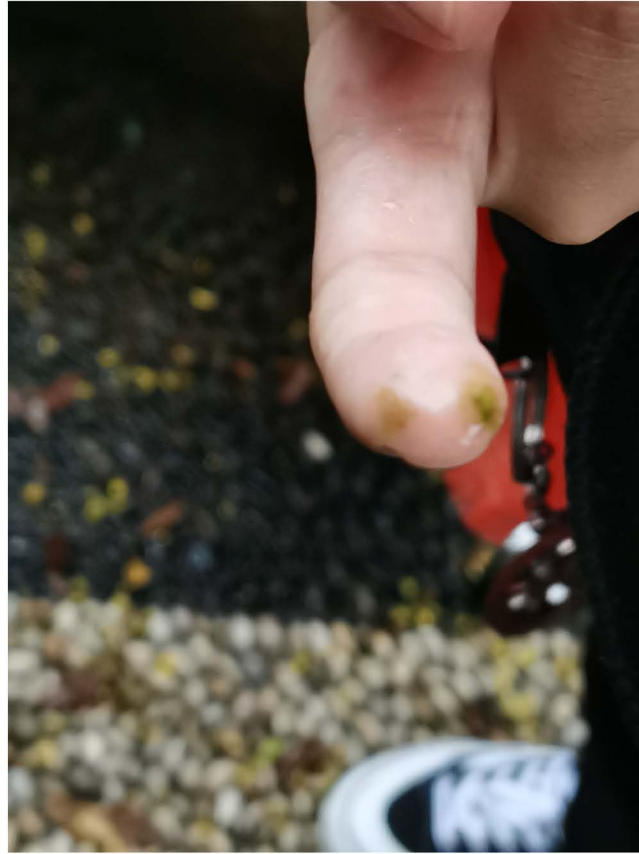
We can taste nothing.



Look closely at a tree, you can find that it's very structured. A tree has its own life net, on which there are many natural signs.

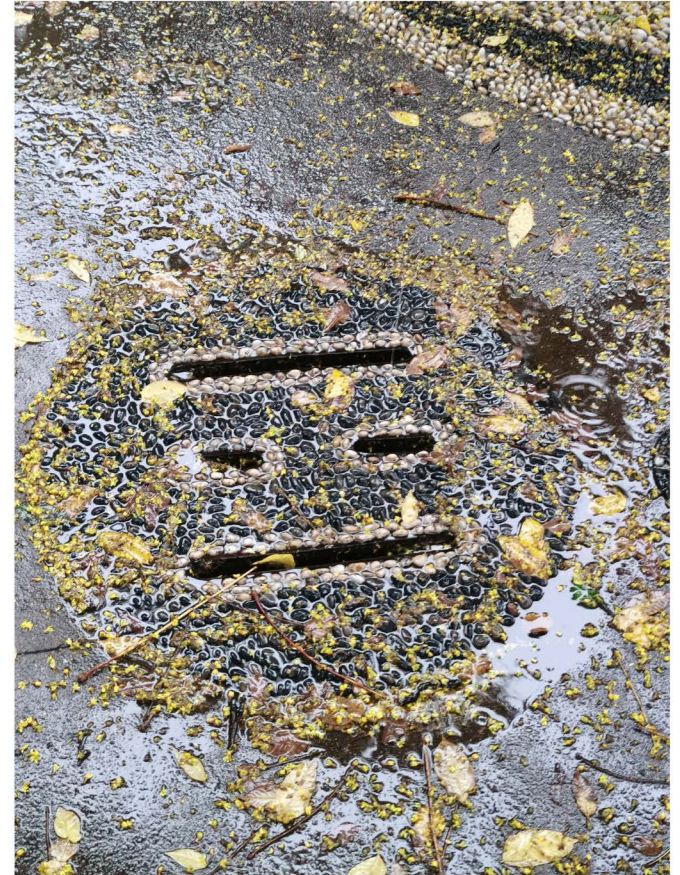
一棵树的生命网络 (自然迹号)



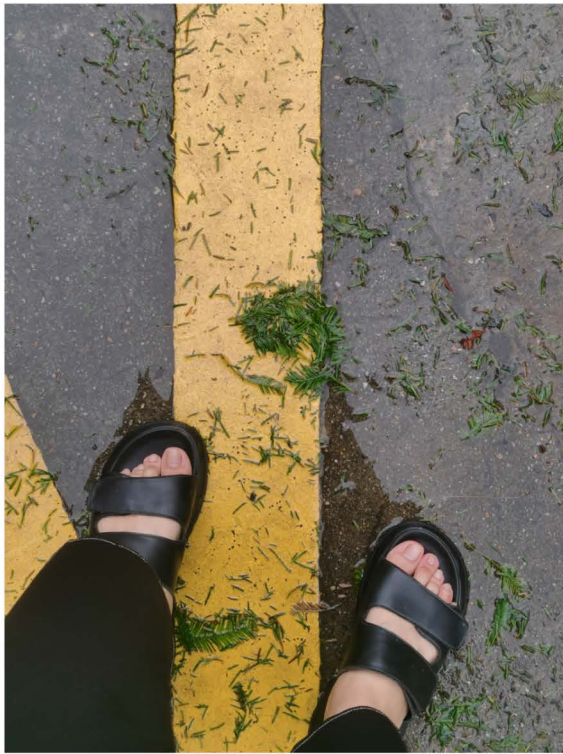


Aagin moss. can be touched down.

Want to see more details.



A well on the ground,
covered with some fallen leaves,
like an emoji an expression



after Typhoon

