





"tantades"

from  
the soil







it's surface  
generates gloss  
through the water membrane





"fuzz"

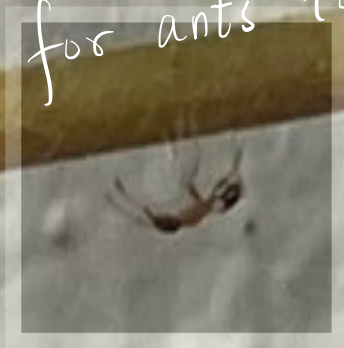


intercept/store water  
--"stop" water





a micro environment  
for ants to cling to.









fibre begins to  
decompose



the growth phases of the flower

Shape      

color      pink → yellow → pink











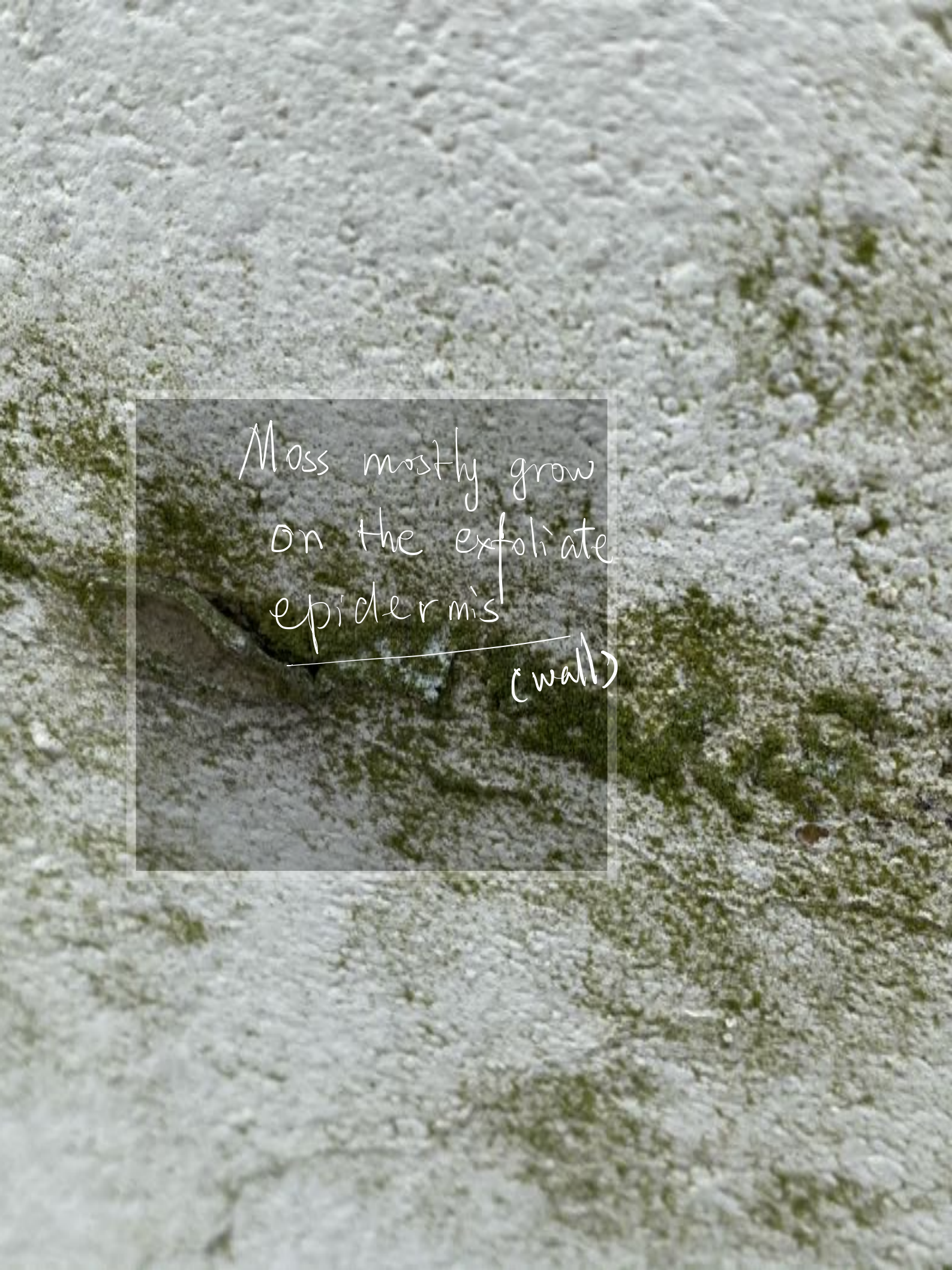
coil



suction  
cups





A photograph of a mossy rock surface. The rock is light-colored and has a rough, textured appearance. Patches of green moss are scattered across the surface. A semi-transparent rectangular box is overlaid on the center of the image, containing handwritten text in white ink. A white line points from the text to a specific area on the rock.

Moss mostly grow  
on the exfoliate  
epidermis!

(wall)









from round to coniform



humus



Snail

centipede







A close-up photograph of a tree trunk showing the outer bark layer. The bark is dark brown and heavily textured, with several large, irregular pieces of bark peeling away from the surface. The peeling reveals a lighter, fibrous inner layer. The overall appearance is rough and weathered. A semi-transparent rectangular box is overlaid on the center of the image, containing the text 'flaky epidermis' in a white, cursive font.

flaky  
epidermis



moth









earthworm









Sprout



Color changes







“Octopus leg”